

WhaTap Labs

Company Profile



About WhaTap Labs

WhaTap Labs is an 8-year-old startup founded in July 2015 that specializes in monitoring service platform.

Company name WhaTap Labs Inc.

Year founded July 2015

CEO Dongjin Lee

Capital USD 350,300

Contacts Tel. +82 2-565-1803 / Fax. +82 504-848-1803

Headcount 78 (As of March 2024)

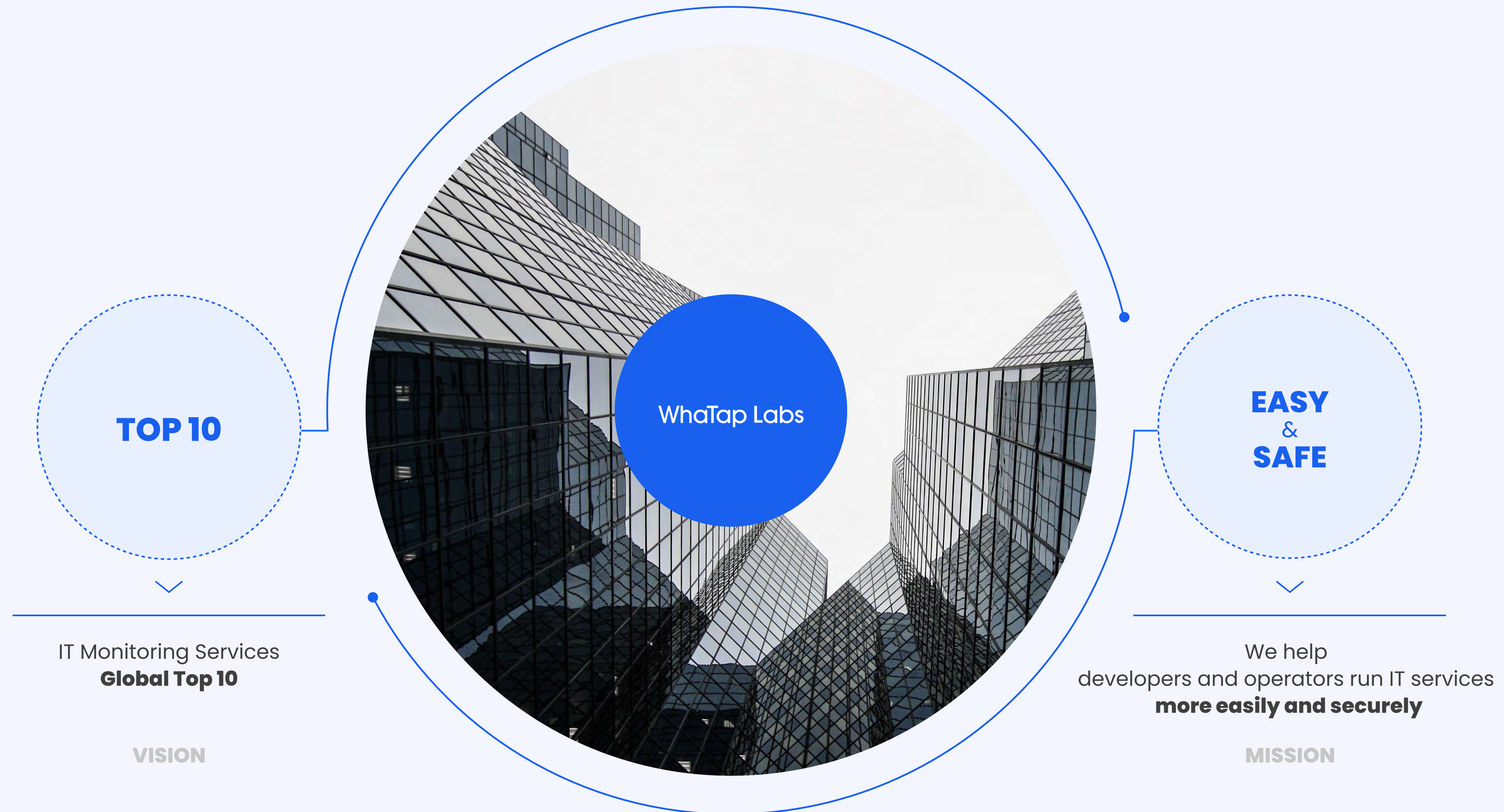
Business Area Enterprise software

Website www.whatap.io

Address 17, Seocho-daero 77-gil, Seocho-gu, Seoul, 13F #1303 (06614)
5-6, Sangmujungang-ro 78beon-gil, Seo-gu, Gwangju, #320 (61949)

VISION & MISSION

WhaTap, a monitoring service platform, is the most popular IT monitoring service in Korea.
Our mission is to help developers and operators run IT services easier and more conveniently.



HISTORY

WhaTap started its monitoring service in November 2015 with the opening of the (former) Server monitoring services and has been releasing new services every year.



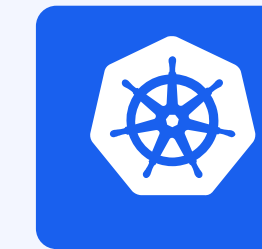
2015 Server

- July** Founded WhaTap Labs
- November** **Server monitoring**



2017 php

- January** AMOREPACIFIC CHINA
- April** **Node.js Monitoring**
- August** **PHP Monitoring**
- September** **Python Monitoring**
- November** Awarded K-ICT Cloud Industry (Ministerial Award)



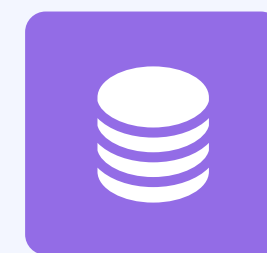
2019 Kubernetes

- March** Tiberio Monitoring
- April** **Kubernetes monitoring**
FILE KOREA
- June** URL monitoring service
Cubrid monitoring service
KB Kookmin Bank
SK broadband
- September** Lotte Members
- December** Ministry of Science and ICT
Postal Business Division



2016 Application

- November** **Java application monitoring**
Awarded the K-Global DB-Stars Grand Prize (Ministerial Award)



2018 Database

- January** LG U+
- February** GS Home Shopping
Patent registration for WhaTap Active Stack
- March** **Database monitoring**
PostgreSQL Monitoring
- April** MySQL Monitoring
- May** Oracle Monitoring
LF mall
- June** Asiana Airlines
- July** MSSQL Monitoring
- November** Lotte Duty Free
- December** SKT



2020 .NET

- January** Carrot Insurance
- February** **.NET application monitoring**
Ministry of Health and Welfare, Korea Centers for Disease Control and Prevention
- March** AI failure prediction service
- April** the Ministry of the Interior and Safety's National Information Resource Service
- June** Korea East-West Power Corporation
- July** Altibase Monitoring

HISTORY

As we continue to roll out our services, our revenue is growing. After three consecutive lucrative years from 2020 to 2023, we have achieved a 3-year average revenue growth of 80%. Starting with browser monitoring in 2023, we plan to release AWS Log and Network monitoring.



2021 Log

- March** Korea Photonics Technology Institute
Korea Local Information Research & Development Institute
Korea Federation of Savings Banks
TOPSPACEMENTS
- April** EBS (Korea Educational Broadcasting Service)
- May** the Ministry of Health and Welfare
- June** Hanwha Asset Management

- November** Korea Educational Research and Information Service (KERIS)
Acquired CSAP (Cloud Security Assurance Program)
Log monitoring
Cloud Metric monitoring
- December** Seoul Metropolitan Government
The Health Insurance Review & Assessment Service



2023 Browser

- January** Emart Everyday Inc
Korea Employment Information Service
- March** National Information Society Agency
Lotte Members
- April** Health Insurance Review & Assessment Service
Kiwoom Securities

- May** **Browser monitoring**
- June** AWS Log monitoring will be released.
- December** Network Performance monitoring will be released.



2022 Observability

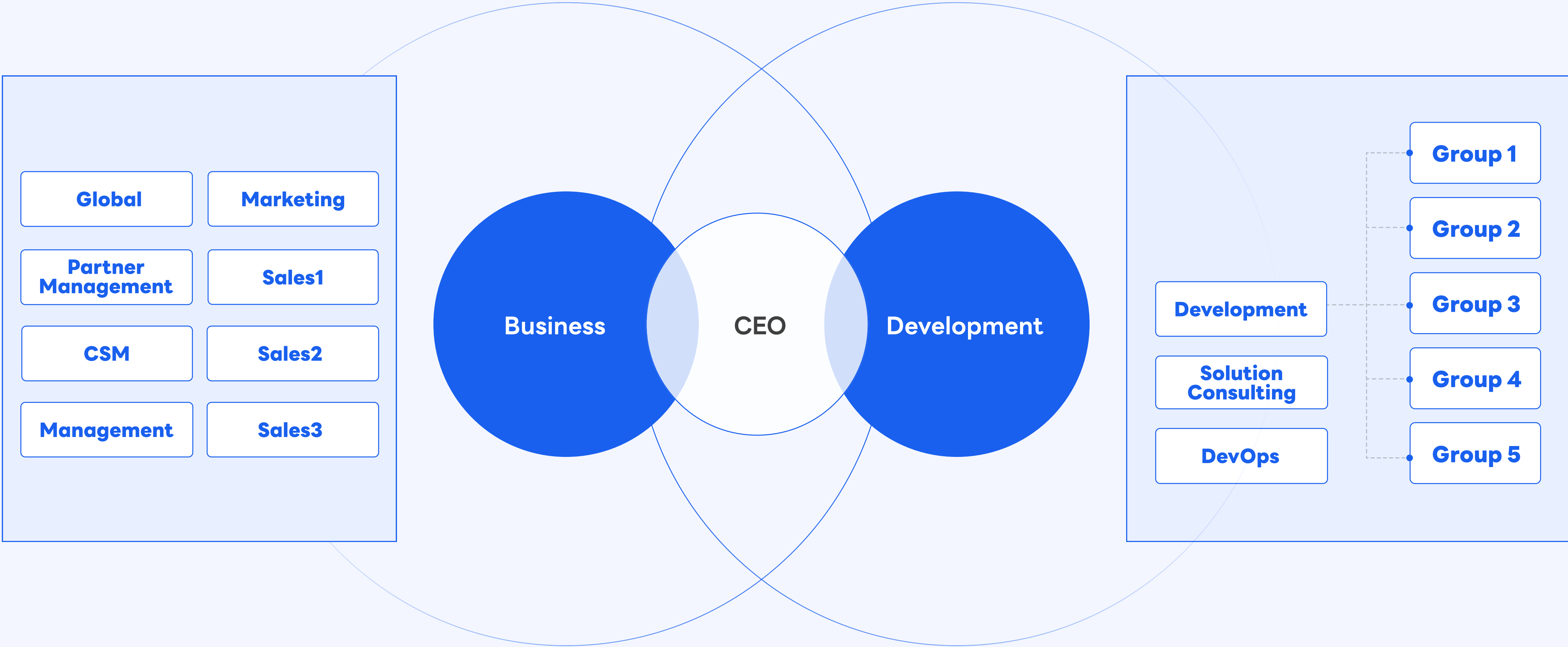
- January** Ewha Womans University
- February** Hyundai AutoEver
CJ Logistics
- March** Kyobo Book Centre
Shinhan Card
Acquired GS certification for WhaTap
Kubernetes V2

- April** Acquired GS certification for WhaTap Database V2
Anti-Corruption and Civil Rights Commission
Integrated Kubernetes Observability
- May** Acquired GS certification for WhaTap Server V2
Hana Card
CJ ENM

- June** Public Home Shopping CSAP
KB Healthcare
- September** National Information Society Agency
- October** Korea Environment Corporation
- November** Incheon Metropolitan City Office of Education
- December** Seoul Metropolitan Government
National Information Society Agency

Organization

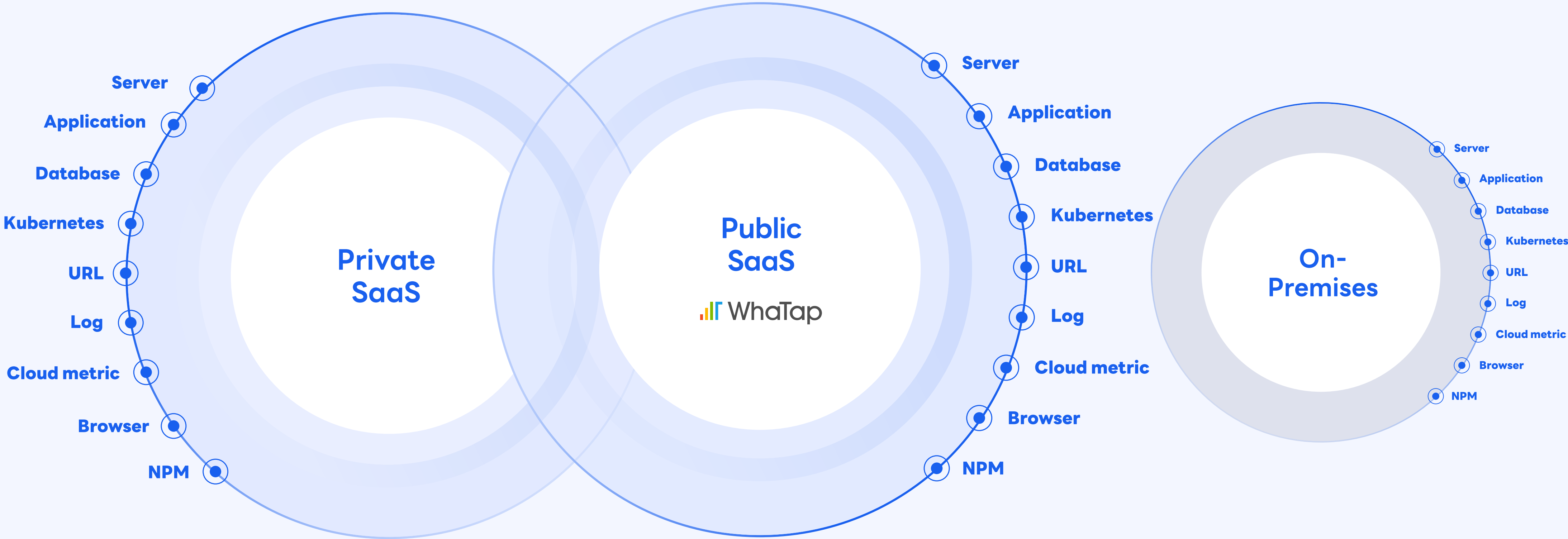
WhaTap is divided into business and development departments. As a tech startup, the number of employees in the development field is 70 percent of the company's total.



Monitoring Platform WhaTap

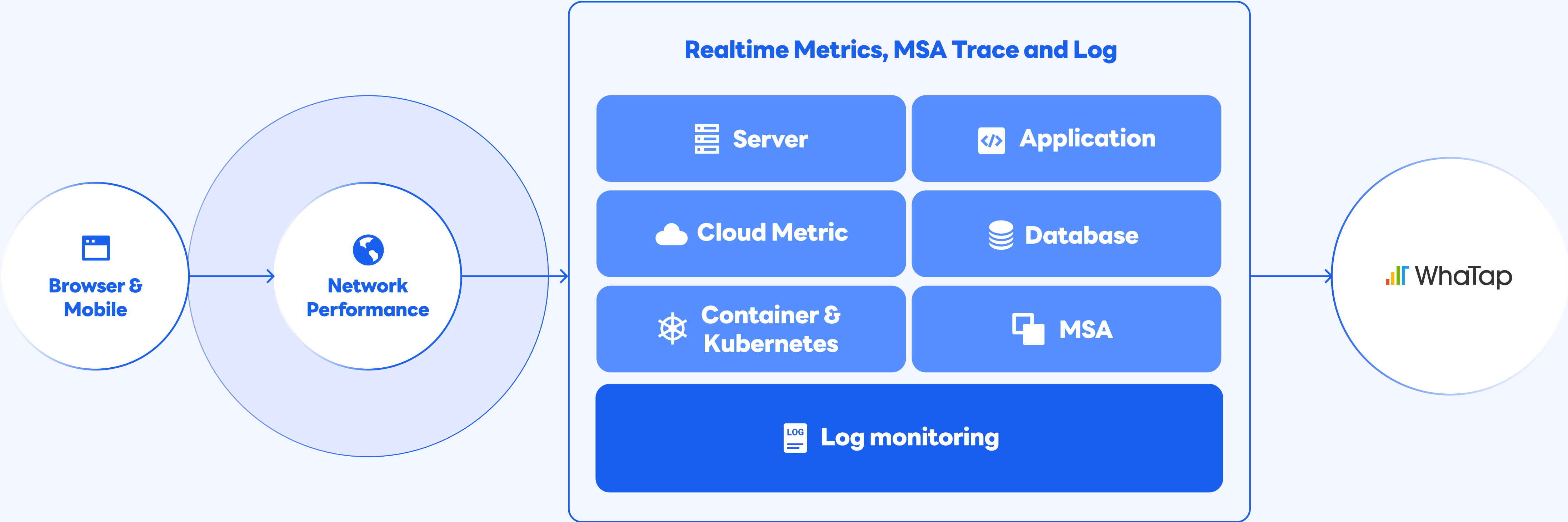
WhaTap is the No.1 SaaS monitoring service and it is expanding into a monitoring service platform. Collect data with one collection server, and create integrated dashboards. The monitoring service platform is available as a public SaaS and can also be deployed as a private SaaS.

In addition, WhaTap products can be installed on-premises like a third party point solution as needed.



End-to-End Full Stack Monitoring

From the browser, where users can experience service performance, to real-time metrics, traces, and logs from IT systems. Whatap provides E2E Full Stack integrated monitoring.



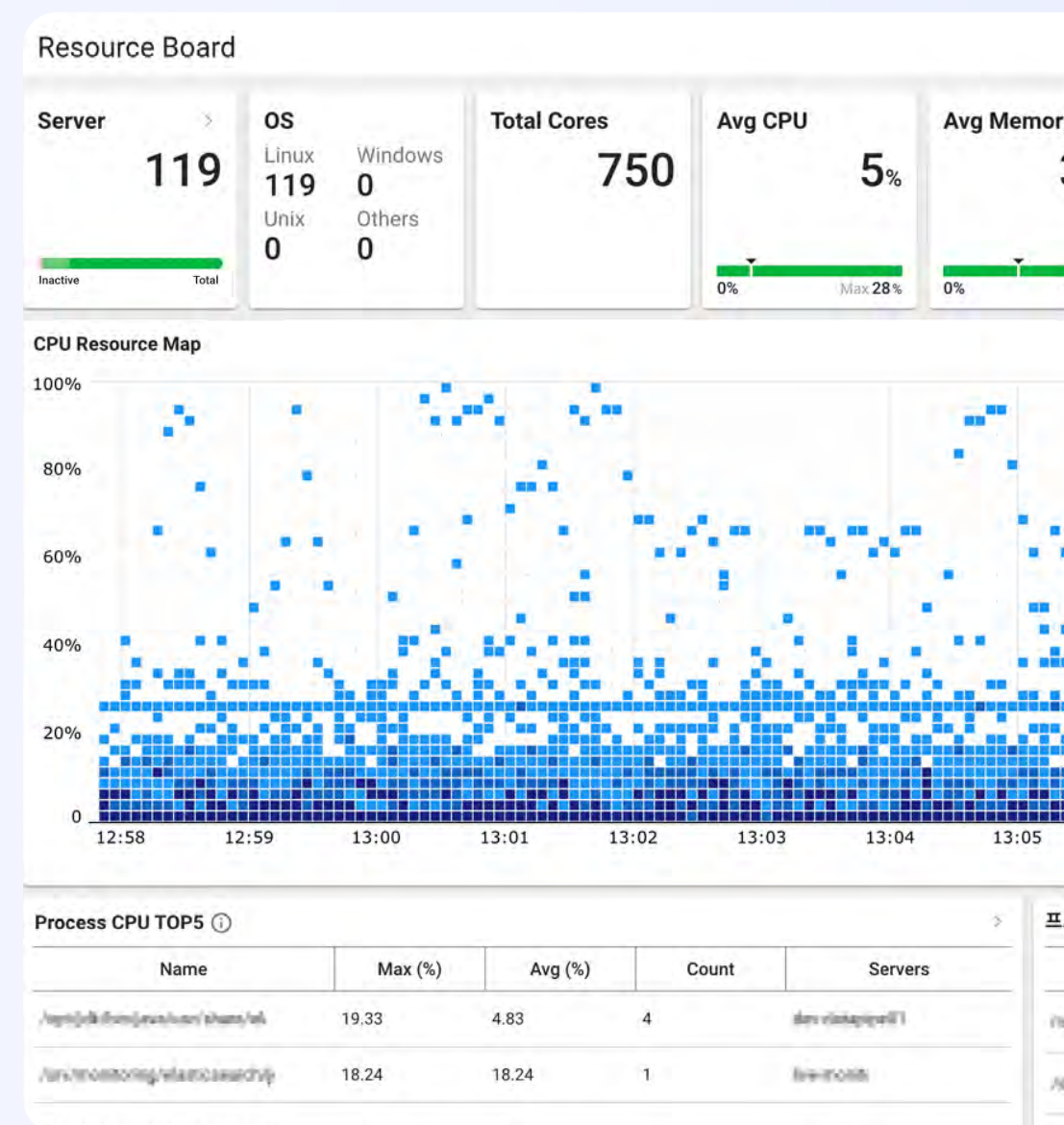
End-to-End Full Stack Monitoring

Browser, server, database, container, cloud metrics, application trace, and log.
 WhaTap is developing a product lineup for E2E full stack monitoring.

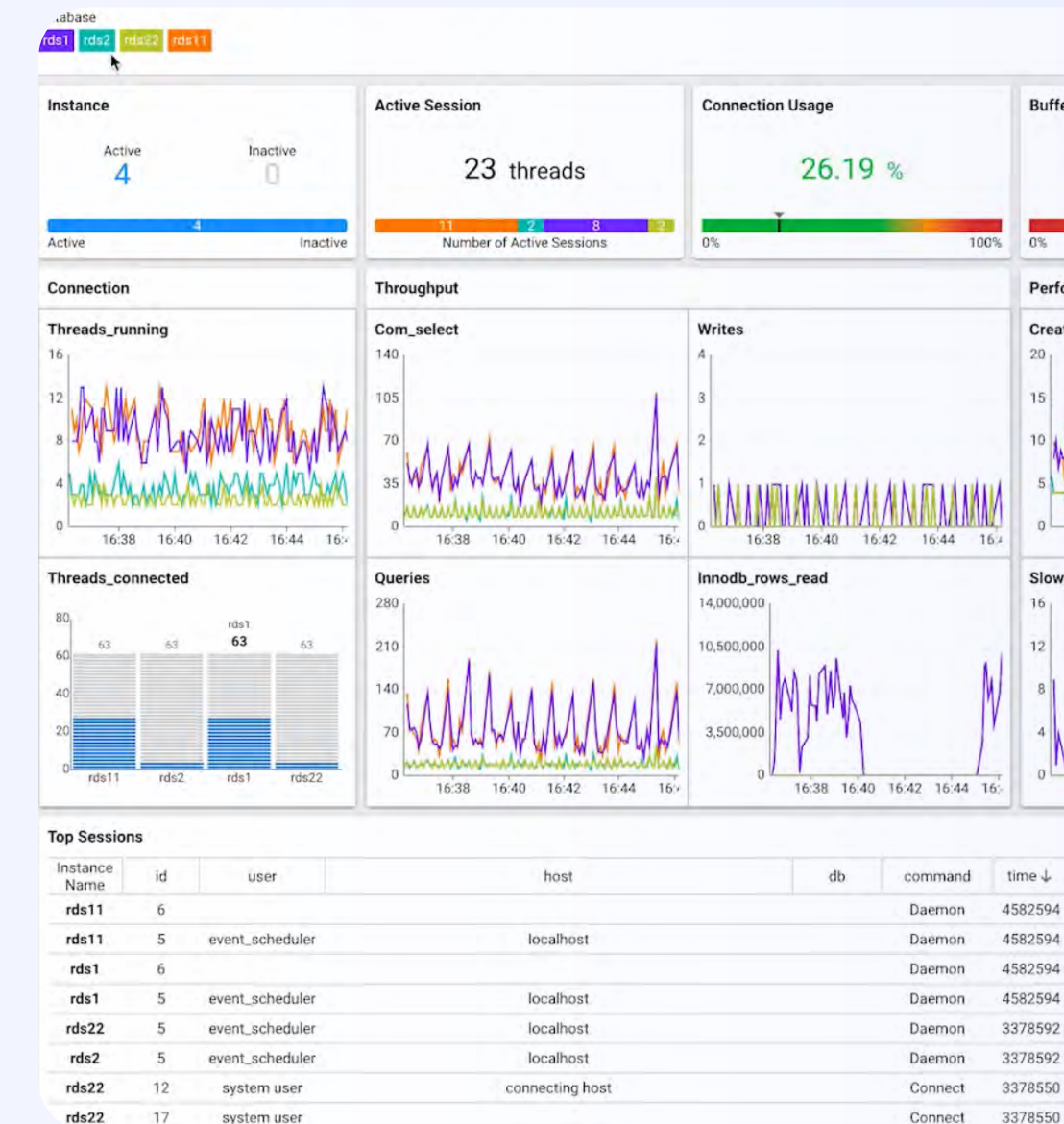
Metrics



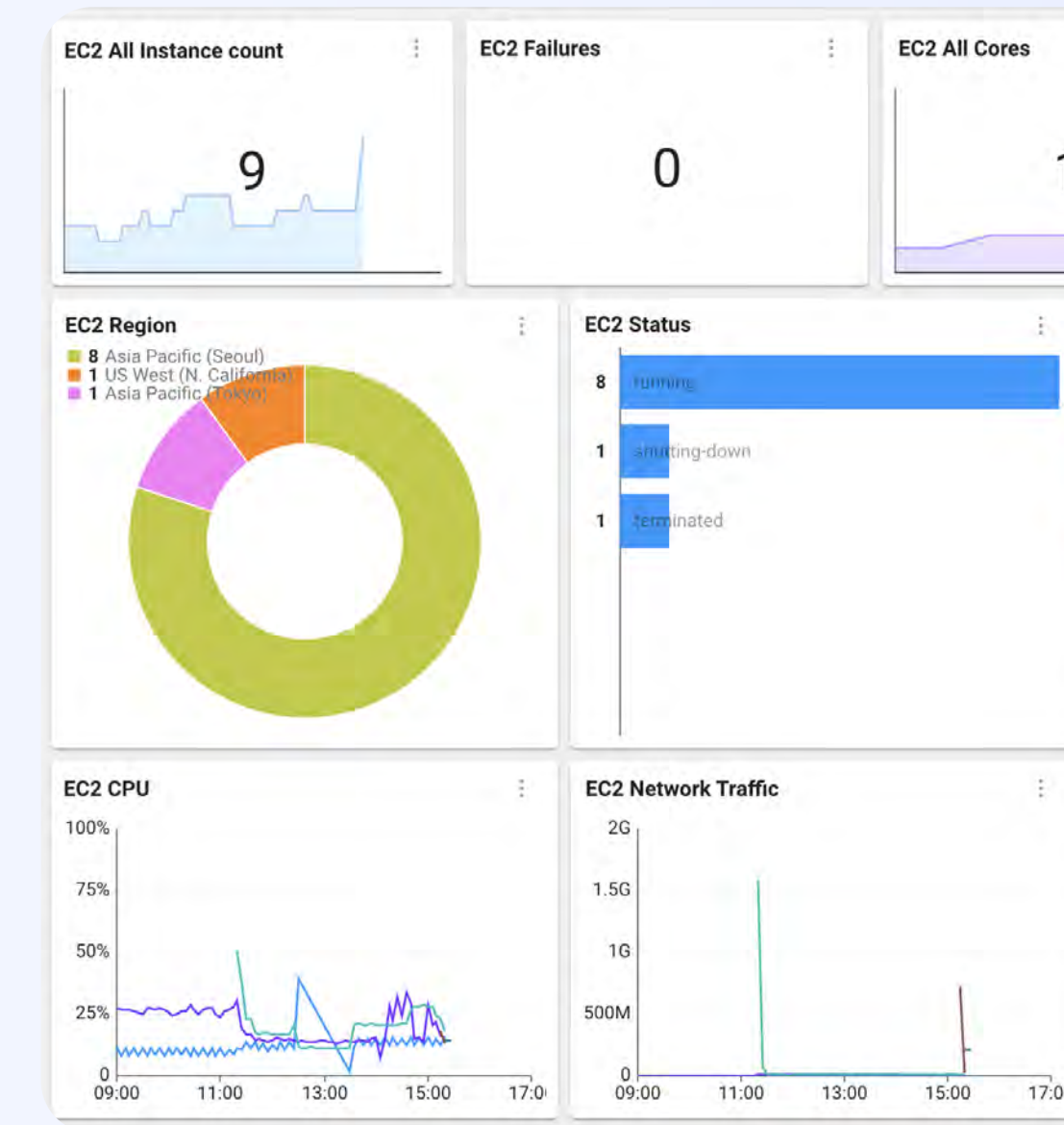
URL, Browser



Server



Database

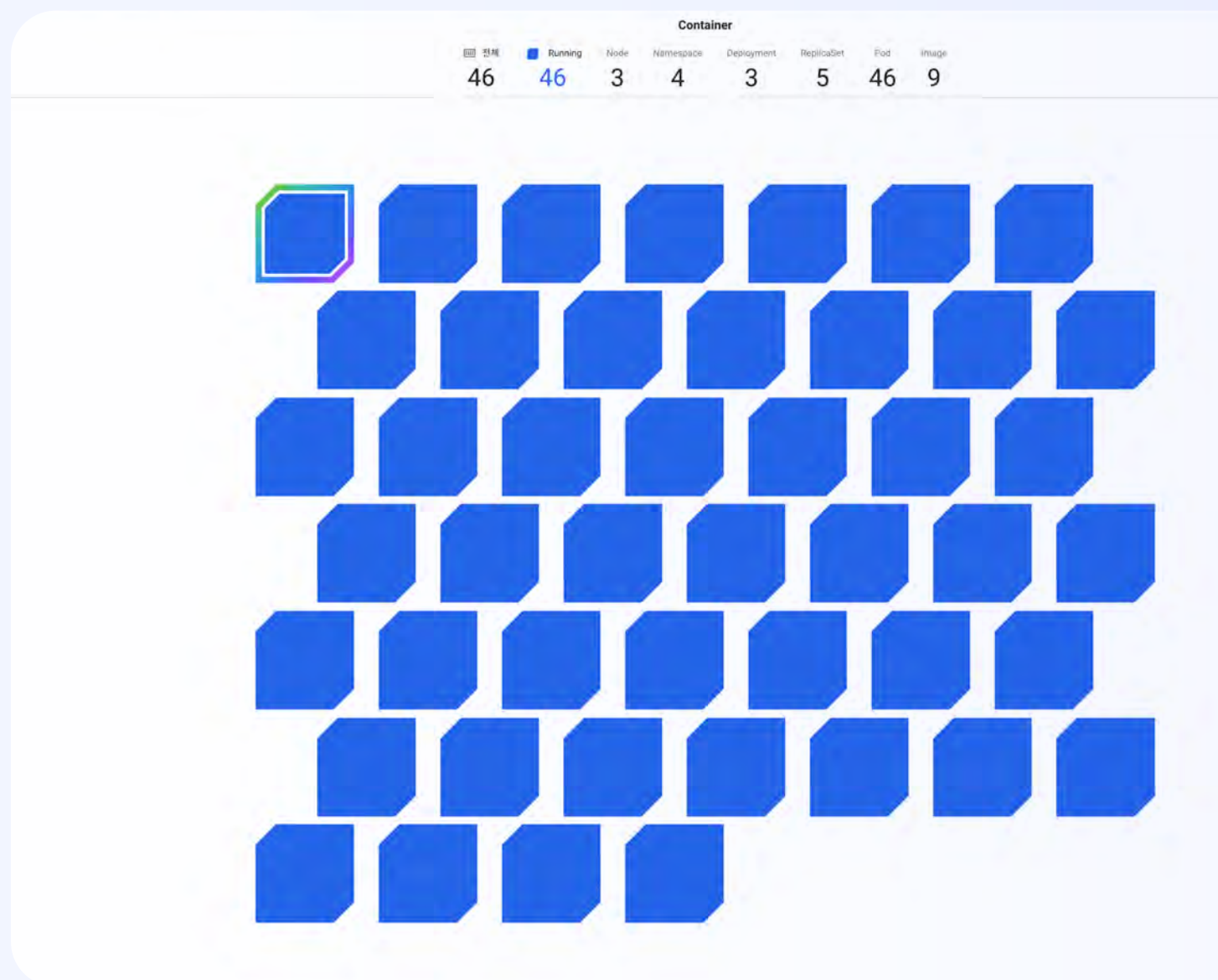


Cloud Metric

End-to-End Full Stack Monitoring

Browser, server, database, container, cloud metric, application trace, and log.
WhaTap is building a product lineup for E2E full stack monitoring.

Trace

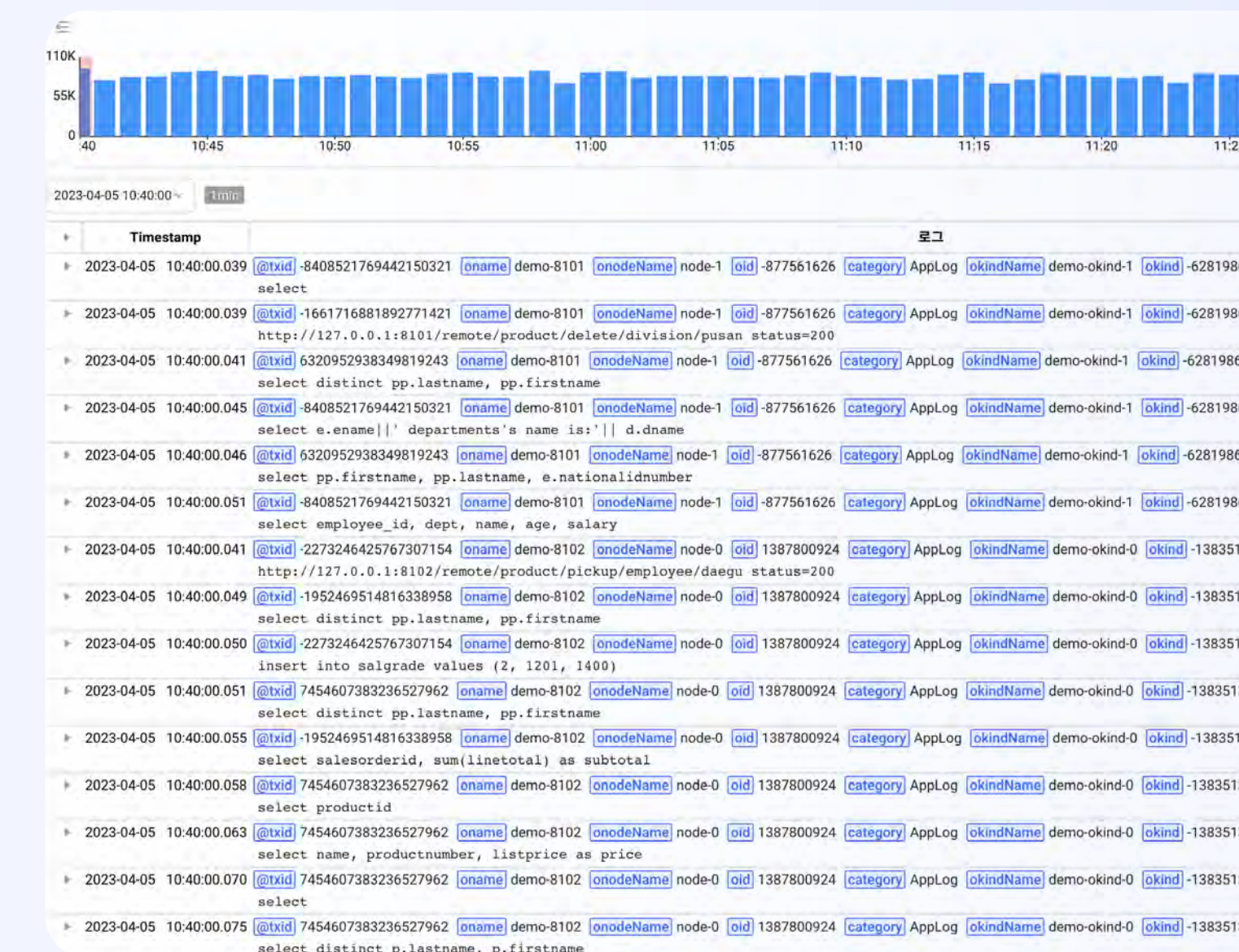


Kubernetes



Application

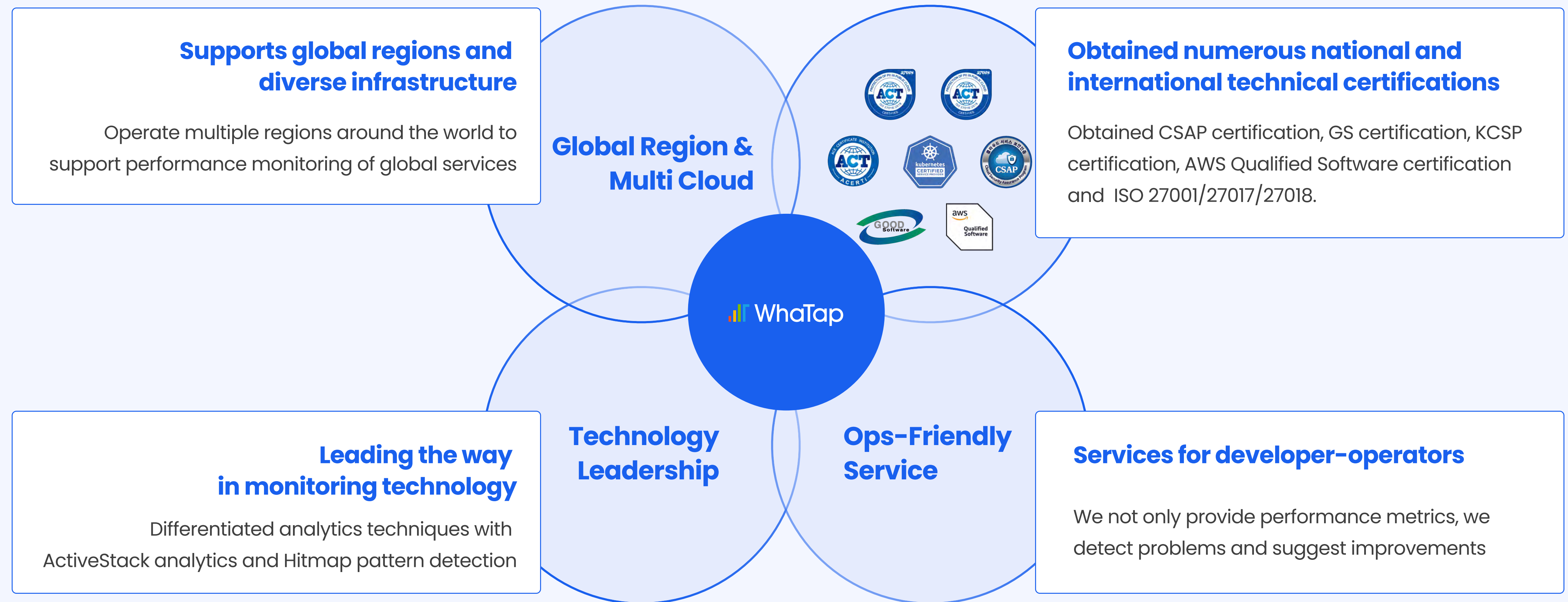
Log



Log

Why WhaTap?

Easy installation, intuitive dashboard, and just a few clicks to check the IT situation. It has obtained national and international technical certifications. Additionally, it incorporates AI/ML technology to assess service risk based on response time patterns.



Why WhaTap?

Global presence

WhaTap delivers efficient service deployment through its global network and infrastructure bases in eight major cities around the world, including California, Frankfurt, Bangkok, Mumbai, Singapore, Jakarta, and Tokyo.



Cloud Platform



HOSTWAY.



Why WhaTap?

Supporting various infrastructure

You can use WhaTap in any infrastructure environment, from legacy to hybrid to multi-cloud.

Legacy Infrastructure

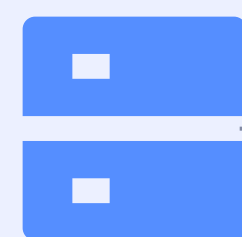
You can still use WhaTap even if you configure your infrastructure at IDC, or in your own data center.



Legacy Infra(IDC)

Hybrid Cloud

Even if your infrastructure is configured with IDC and cloud, WhaTap can manage data from one collector server to check the status of your hybrid infrastructure in one dashboard.



Legacy Infra(IDC)



Cloud Platform

Multi-cloud

WhaTap's regions are organized into multi-clouds such as AWS, Azure, Huawei, Naver, Kakao, and Hostway, so customers who use multiple cloud platforms can choose a region near them.



AWS



Naver

Supports a variety of infrastructure.

Why WhatTap?

Obtained numerous national and international technical certifications

We have been recognized for our skills by obtaining CSAP certification, GS certification, KCSP certification, AWS Qualified Software certification and ISO 27001/27017/27018.



ISO 27001, 27017, 27018 Certification

International Standard Certification for cloud service information and personal information protection.

KCSP Certification

Certification for organizations that have the competency and experience to perform professional Kubernetes services.

CSAP Certification

Certification validates conformance to the Cloud Computing Services Information Privacy Standard.

GS Certification

Certified to meet the Good Software Grade 1 criteria.

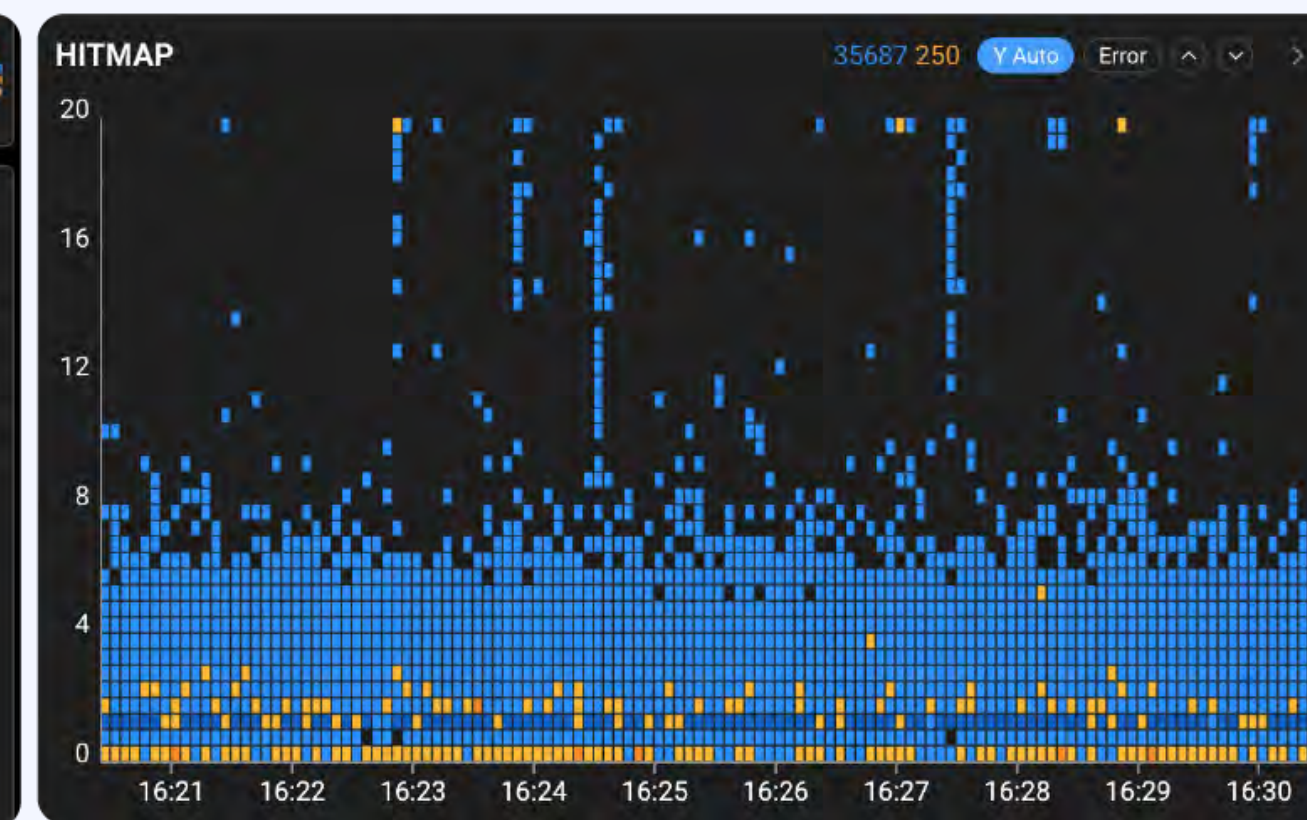
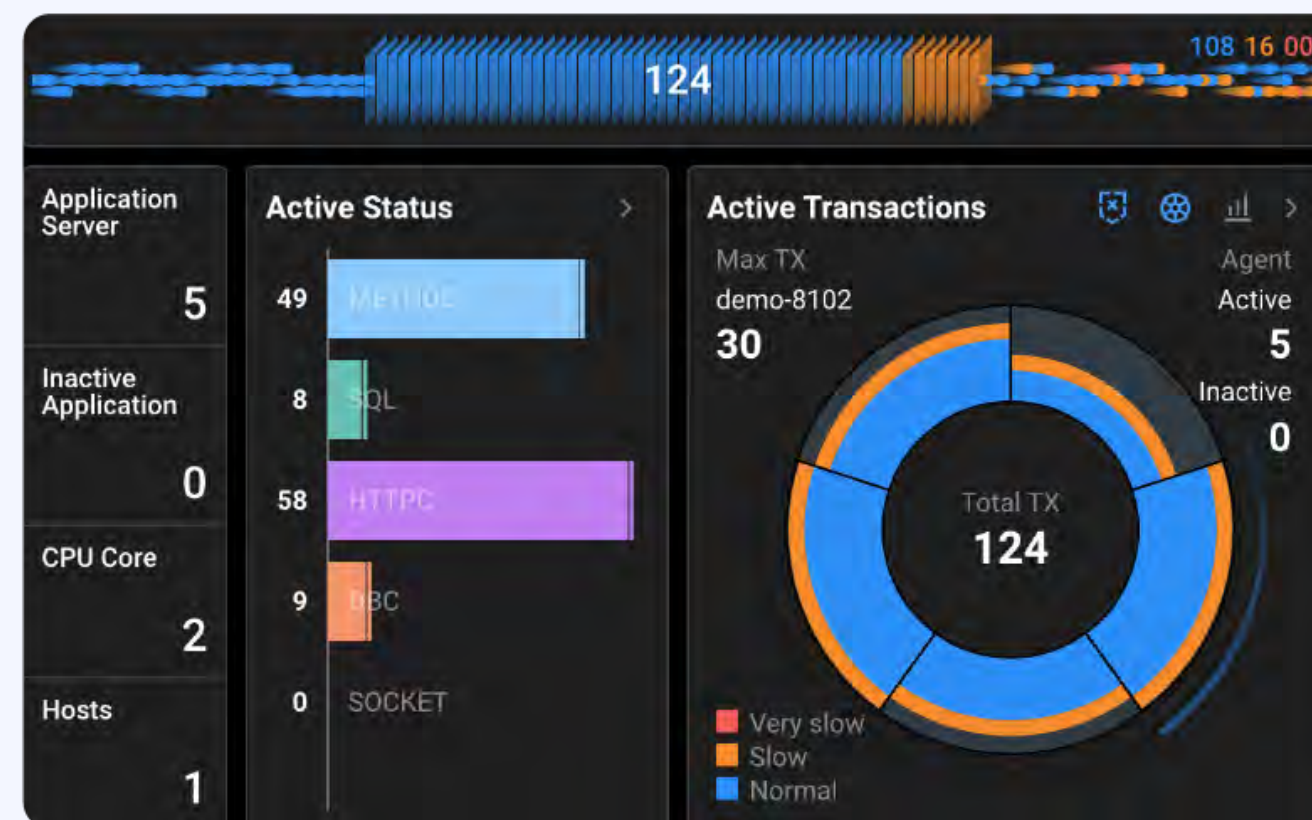
AWS Partner

Obtained the AWS Software Pass AWS Qualified Software.

Why WhatTap?

Leading the way in monitoring technology

Supports differentiated analytics techniques with Active Stack analytics and detect anomalous patterns in response time distributions with AI/ML technology.



Transaction monitoring systems and how they work

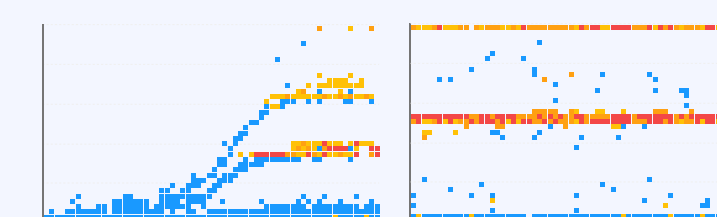
Whatap's patented technology, Active Stack Analysis, enables detailed analysis without having to select and reproduce profiling targets

Patent No. 10-1828156

Learning-based transaction observation system and its way of controlling

All problematic transactions can be identified with a hitmap that actively shows the response time distribution in a chart

Patent No. 10-2307948



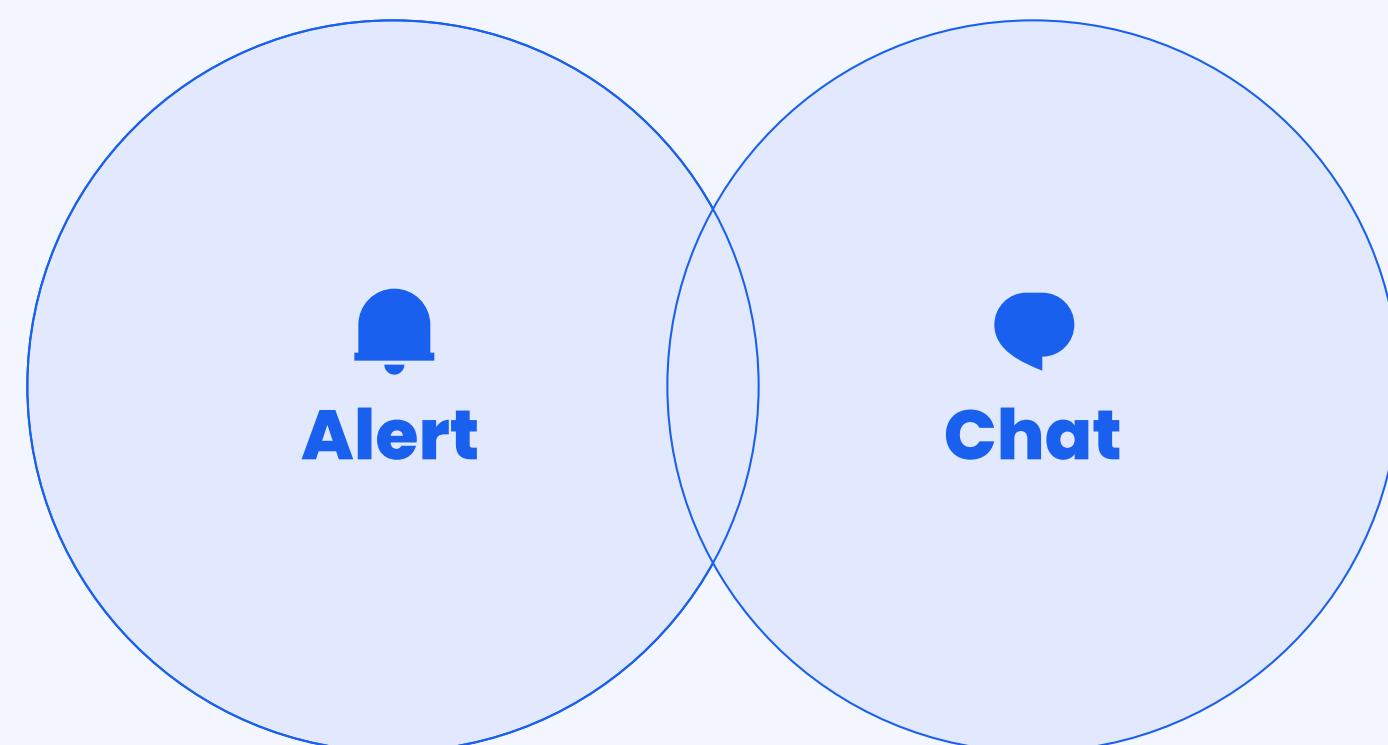
Why WhatTap?

developers & operators

WhatTap is an Ops-Friendly Service that provides not only performance analytics, but also problem detection and improvement suggestions.

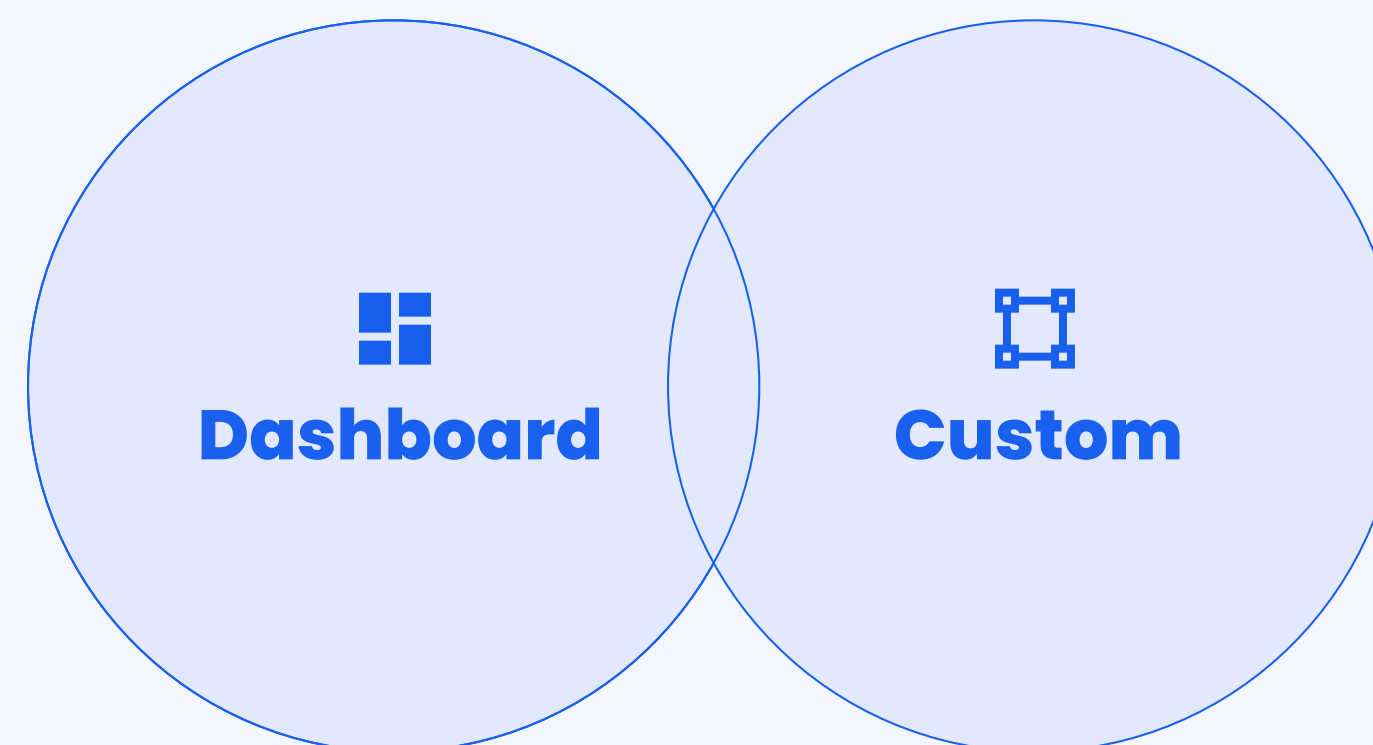
Convenient and versatile notifications / live tech support

Convenient with various notification integrations and live chat support.



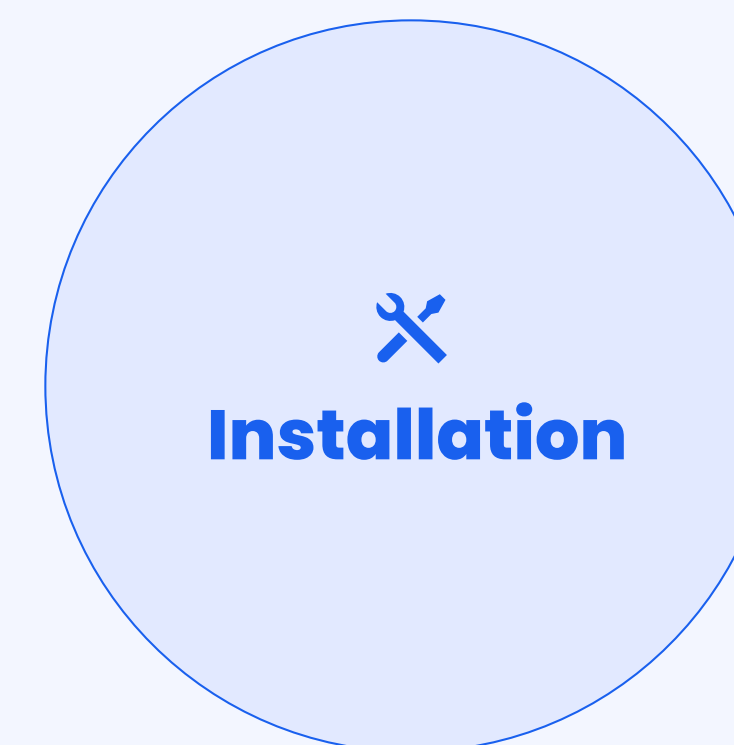
Custom metrics integrated collection / custom dashboards

Intuitive dashboards to see your failure situation with a glance, customizable integrated dashboard "flexboards". Custom data integrated collection.



Easy installation with minimized settings

Easy installation, minimal option setup to get your monitor up and running.



Ops-Friendly Service

Customers

Companies ranging from public & financial organizations, large enterprises, and SMEs have chosen WhaTap.

Government	Financial Institutions	Large Enterprises	SMEs	Startups
 책임운영기관 국가정보자원관리원	 *b KB 국민은행	 LG U+	 11D	 bithumb
 우정사업정보센터	 신한은행	 HYUNDAI	 STARBUCKS®	 Jobis
 건강보험심사평가원 <small>HEALTH INSURANCE REVIEW & ASSESSMENT SERVICE</small>	 롯데카드	 LOTTE	 Pulmuone	 여기어디.
 KERIS <small>한국교육학술정보원</small>	 신한카드	 CJ	 MISSHA	 직방
 질병관리청	 하나카드	 ASIANA AIRLINES	 FILA	 wadiz
 법무부	 truefriend 한국투자 증권	 DOOSAN	 아프리카TV	 true balance
 KLID 한국지역정보개발원	 키움증권	 SK	 I:mall	 MUNPIA
 EWP <small>한국동서발전주</small>	 KYOBO 교보생명	 kt	 OASIS	 BURGER KING
			 i.M <small>IDEAL.MOBILITY</small>	

WhaTap Labs helps developers
and operators run IT services
more easily and securely.
Thank you.

If you are interested in our services, please feel free to contact us.
global@whatap.io