

A New Experience In Big Data Analytics



IRIS VDAP

Big data analytics platform

Big Data and Next-generation AI

www.mobigen.com



Connect all the data across your organization to create a unified view and,
Discover meaningful insights with a variety of visualization analysis

Data Platform based on data virtualization

Insight



Tech Features

VDAP



- Intuitive data exploration
- Refining and processing data for analytics
- Custom Dashboards and reports
- Data Visualizations by various analysis types
- Easy and convenient Spatial data Mapping
- Detailed spatial data processing

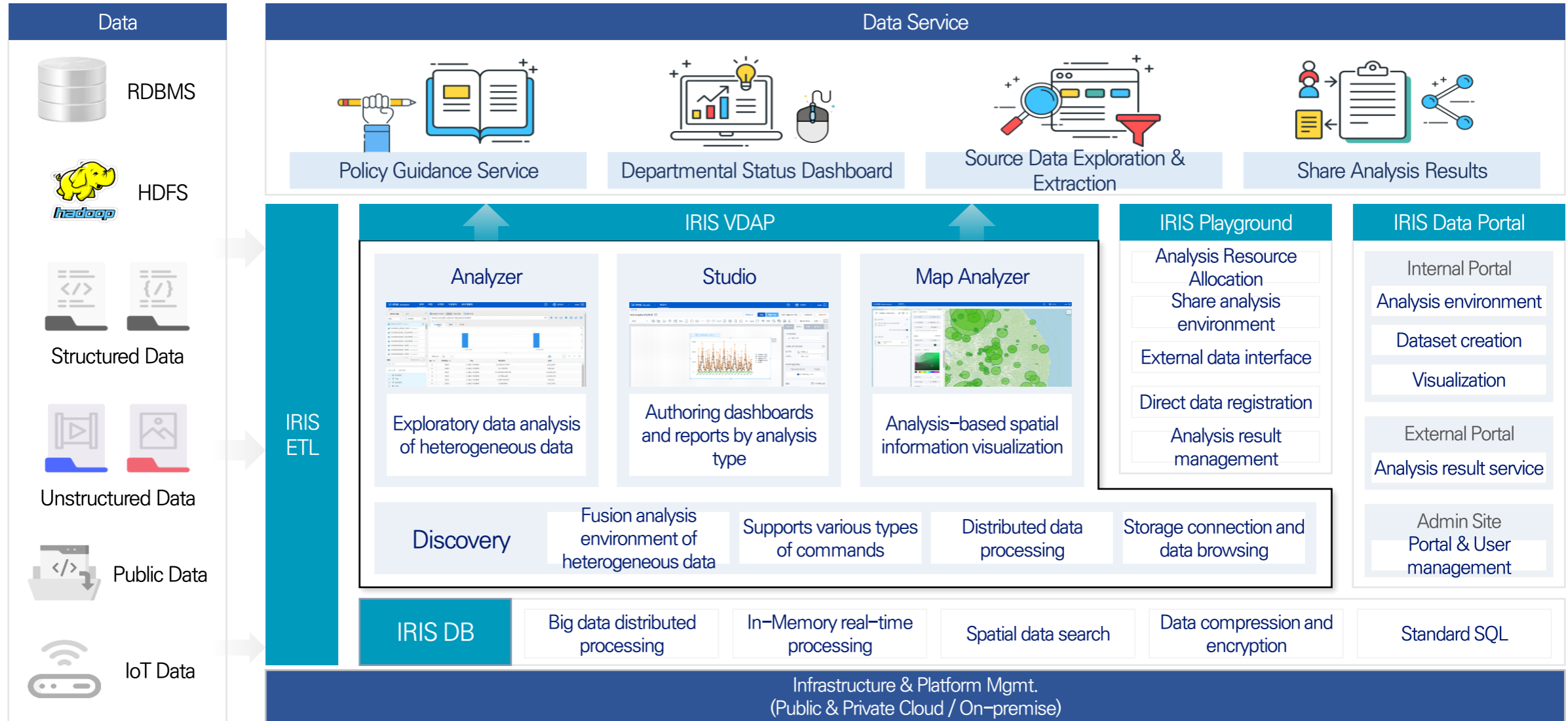
Solutions / fields

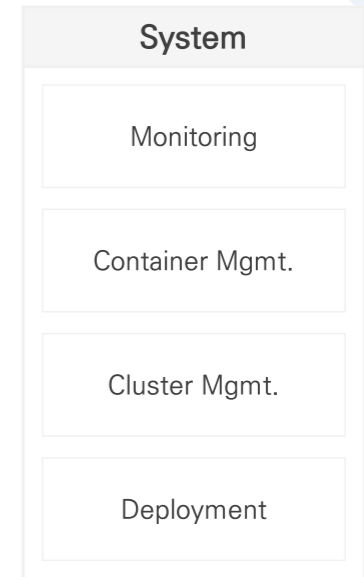
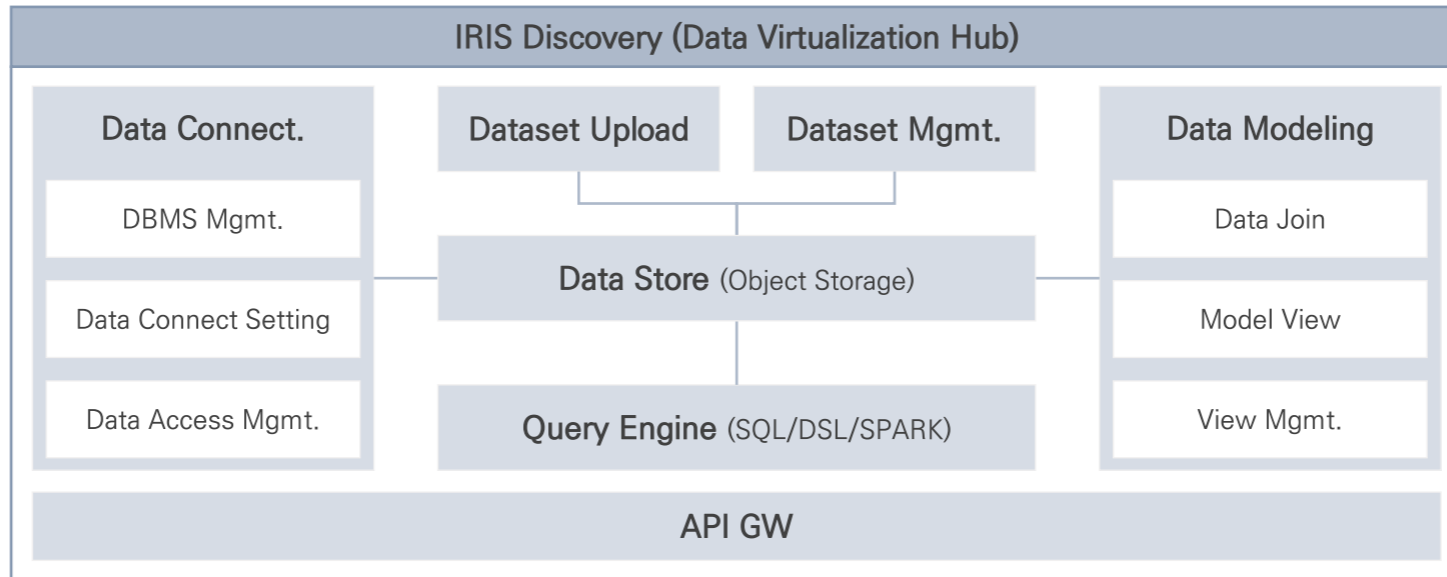
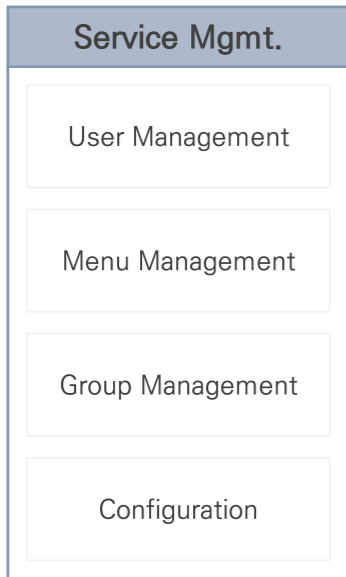
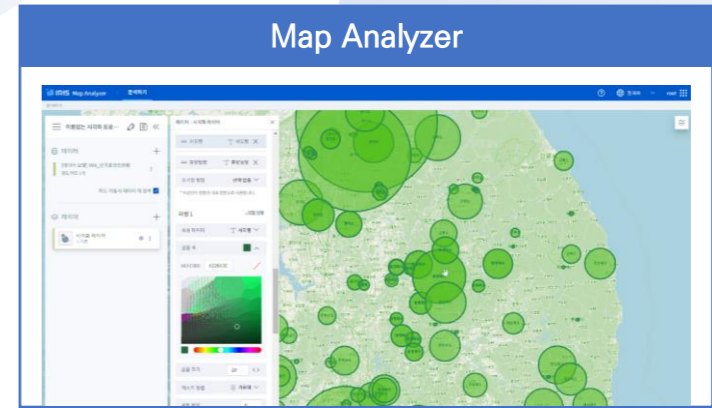
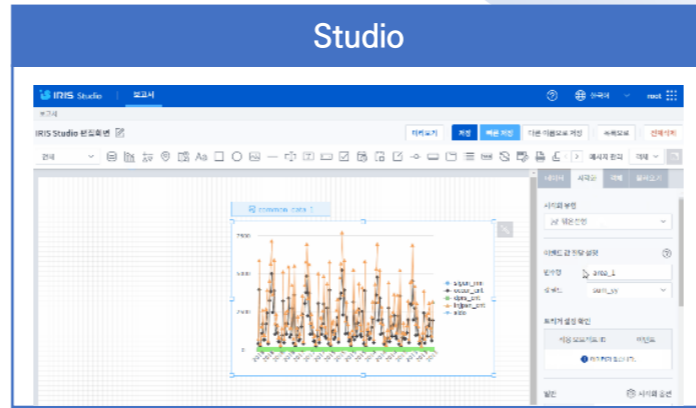
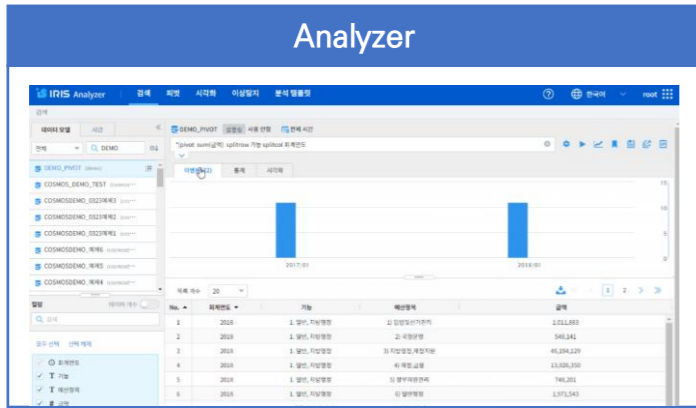


Etc ...

- Gov.
- Defense
- MFT.
- Finance
- Comms.
- IoT
- Smart City

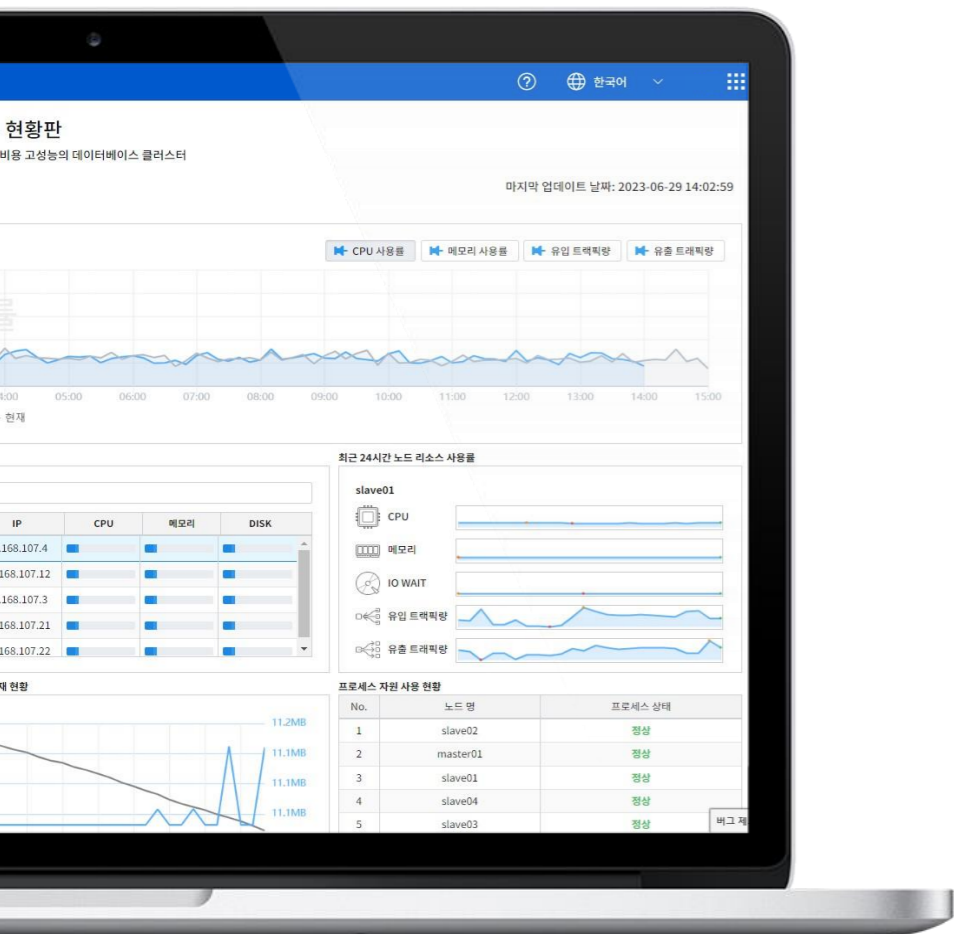
Large-capacity, high-performance Bigdata-AI platform product line – IRIS





Large-capacity, high-performance Bigdata-AI platform product line – IRIS

Data Business Becomes Real with IRIS VDAP



Data Integration based on Data Virtualization

- ✓ Connects variety of source data such as HDFS, RDBMS, Storage, File, etc.
- ✓ Provides multiple data sources in a single view

Unified visual data analysis from the exploratory data analysis to reports/dashboards

- ✓ Descriptive statistics inquiry of source data
- ✓ Variety of visualization components and options
- ✓ User interface with low code approach
- ✓ Report/Dashboard authoring tool

Collaboration and sharing of analytical tasks and results

- ✓ Manages data access rights by user/group
- ✓ Shares task templates with users
- ✓ Transfers analysis results to the external system

Support for operation in cloud environment

- ✓ Docker-containerized software package
- ✓ Supports Kubernetes operation environment
- ✓ Designs to optimize system resources according to the workload

Flexible data connectivity and data virtualization Discovery

Providing efficiency and flexibility by logical data integration of distributed, various type of DBMS data

Defining and managing model objects for analysis

Select the data and columns for analysis

IRIS Big Data Platform 데이터브라우저 > 데이터모델

데이터 모델 목록

모델명	설명	작업	데이터	데이터 유형	소유자	수정일	공유
KM		편집	HMY.MDMS_JIN_LE	LOCAL	hmy	2018/04/04 13:31:48	<input checked="" type="radio"/> 비공개 <input type="radio"/> 그룹 <input type="radio"/> 전체
M_ASOS	기상관측정보 (만동 136, 경남 159)	편집	HEEJO.ASOS	LOCAL	heejo	2018/04/02 18:17:45	<input type="radio"/> 비공개 <input type="radio"/> 그룹 <input type="radio"/> 전체
M_SGEN	태양광 발전량 (대전 8980, 영주9851)	편집	HEEJO.SOLAR_GEN	LOCAL	heejo	2018/04/02 18:16:53	<input checked="" type="radio"/> 비공개 <input type="radio"/> 그룹 <input type="radio"/> 전체
TEST_ASOS		편집	HEEJO.ASOS	LOCAL	root	2018/04/02 17:13:06	<input type="radio"/> 비공개 <input type="radio"/> 그룹 <input checked="" type="radio"/> 전체
M_PV_GEN		편집	HEEJO.PV_GEN	LOCAL	heejo	2018/04/02 16:56:27	<input checked="" type="radio"/> 비공개 <input type="radio"/> 그룹 <input type="radio"/> 전체
syslog		편집	EVA.SYSLOG	LOCAL	eva	2018/04/02 14:56:47	<input type="radio"/> 비공개 <input type="radio"/> 그룹 <input checked="" type="radio"/> 전체
test_model	test model	편집	EVA.S_TEST	LOCAL	eva	2018/03/12 14:32:57	<input type="radio"/> 비공개 <input type="radio"/> 그룹 <input type="radio"/> 전체
IRIS_S_TRANSPORT_SAMPLING		편집	SUN.S_TRANSPORT_SAMPLE_MULTIMEDIA	LOCAL	sun	2018/03/07 14:52:32	<input type="radio"/> 비공개 <input type="radio"/> 그룹 <input type="radio"/> 전체
TEST_STIX_PoisonIvy	STIX 예제 데이터	편집	SJS.TEST_STIX_2	LOCAL	sjs	2018/03/06 12:55:00	<input type="radio"/> 비공개 <input type="radio"/> 그룹 <input type="radio"/> 전체
NTOP_SUMMARY_APPLICATION		편집	NTOPETL.NTOP_APPLICATION_SUMMARY	LOCAL	ntopetl	2018/03/02 16:44:32	<input type="radio"/> 비공개 <input type="radio"/> 그룹 <input type="radio"/> 전체
NTOP_SUMMARY_IP		편집	NTOPETL.NTOP_IPV4_SUMMARY	LOCAL	ntopetl	2018/03/02 16:44:31	<input type="radio"/> 비공개 <input checked="" type="radio"/> 그룹 <input type="radio"/> 전체
NTOP_SUMMARY_INTERFACE	Ntopng 에서 발생하는 데이터를 로딩 한 뒤 INTERFACE 기준으로 생성한 통계값	편집	NTOPETL.NTOP_INTERFACE_SUMMARY	LOCAL	ntopetl	2018/02/23 10:26:46	<input type="radio"/> 비공개 <input type="radio"/> 그룹 <input type="radio"/> 전체
IRIS_S_TRANSPORT_TEST	APP_XDR_0511의 APP_GROUP_CD=Multimedia	편집	SUN.S_TRANSPORT_SAMPLE_MULTIMEDIA	LOCAL	sun	2018/02/19 10:24:42	<input type="radio"/> 비공개 <input type="radio"/> 그룹 <input type="radio"/> 전체
KICT_REVIEW		편집	BATTING.BATTING	LOCAL	root	2018/02/13 14:03:31	<input type="radio"/> 비공개 <input type="radio"/> 그룹 <input type="radio"/> 전체
NTOP_ETL	Ntopng 에서 발생하는 데이터를 logstash로 필터링 하여 IRIS-ETL Process로 처리된 데이터	편집	NTOPETL.NTOP_HISTORY	LOCAL	root	2018/02/12 14:50:55	<input type="radio"/> 비공개 <input type="radio"/> 그룹 <input type="radio"/> 전체
공황철도_REVIEW		편집	BATTING.BATTING	LOCAL	root	2018/02/09 15:50:27	<input type="radio"/> 비공개 <input type="radio"/> 그룹 <input type="radio"/> 전체

모델 수정 - geoip_test

모델명: geoip_test

설명: geoip 명령어 테스트 대상 테이블입니다.

대상: 데이터 HDFS /B-IRIS/USERS/intern/ip_ad.csv 찾아보기 분리 기호: ,

샘플 데이터 (최근 10건)

No.	UPDATE_TIME	IP_ADDR	IN_BYTES_SUM	OUT_B
1	20180308000000	1.239.16.78	396.0	
2	20180308000000	93.171.103.79	519.0	
3	20180308000000	220.126.80.17	1038.0	
4	20180308000000	192.168.10.13	7200.0	
5	20180308000000	69.76.241.141	519.0	
6	20180308000000	110.11.108.117	770.0	

필터링 설정

유형	필터링	유형	기타
시간	<input checked="" type="checkbox"/> UPDATE_TIME	TIMESTAMP	YYYYMMDDHHmmss
원시	<input checked="" type="checkbox"/> ---선택---	TEXT	
선택됨	<input checked="" type="checkbox"/> IP_ADDR	TEXT	
	<input checked="" type="checkbox"/> IN_BYTES_SUM	NUMBER	
	<input checked="" type="checkbox"/> OUT_BYTES_SUM	NUMBER	

취소 저장

Data Modeling (Iris Discovery)



Exploratory Data Analysis

Analyzer

Quick and easy data analytics tool for insights from various data sources

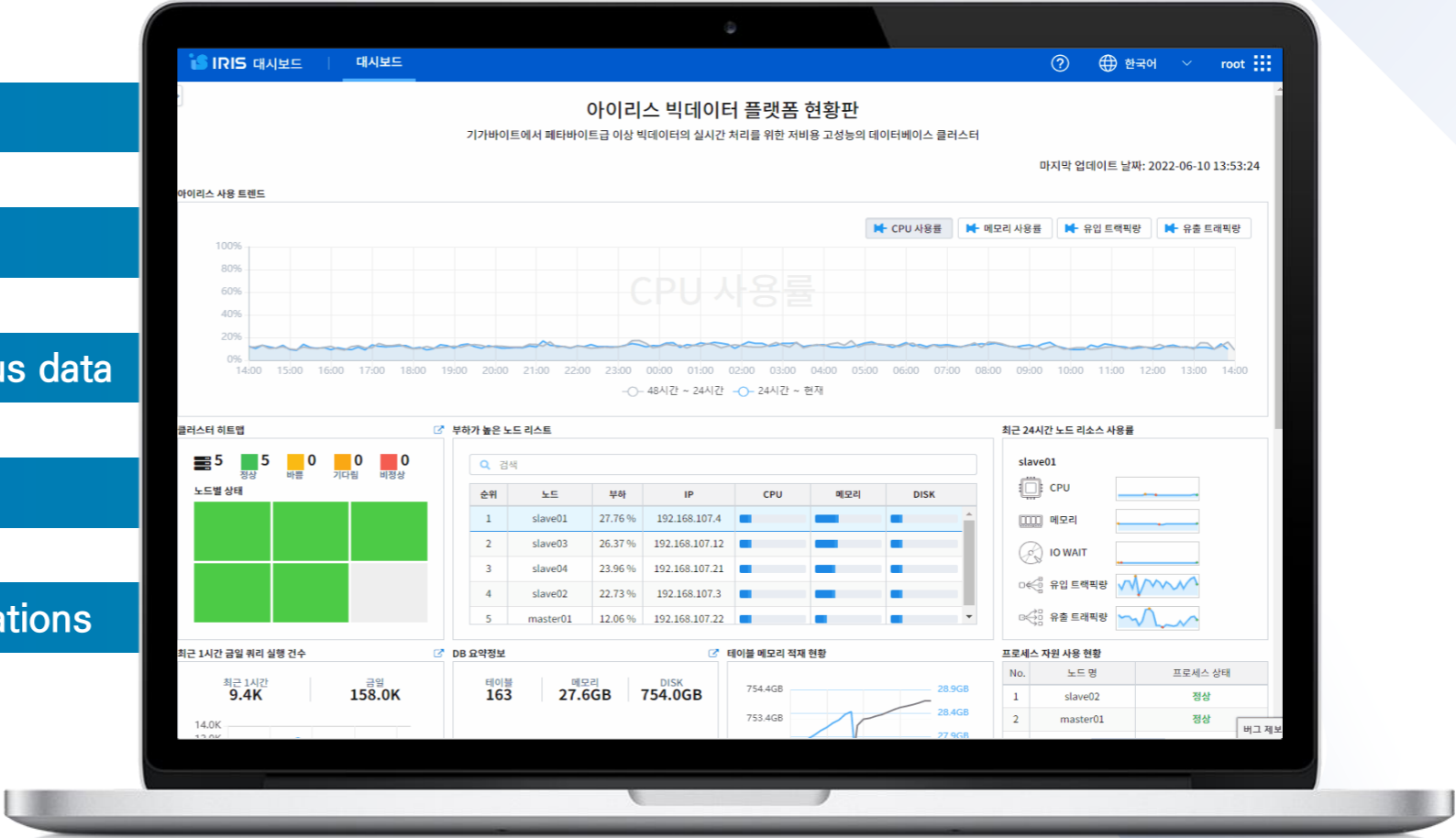
Data exploration and processing

Data pivoting analysis

Analysis and visualization of various data

Anomaly detection for your data

Templates for results and visualizations

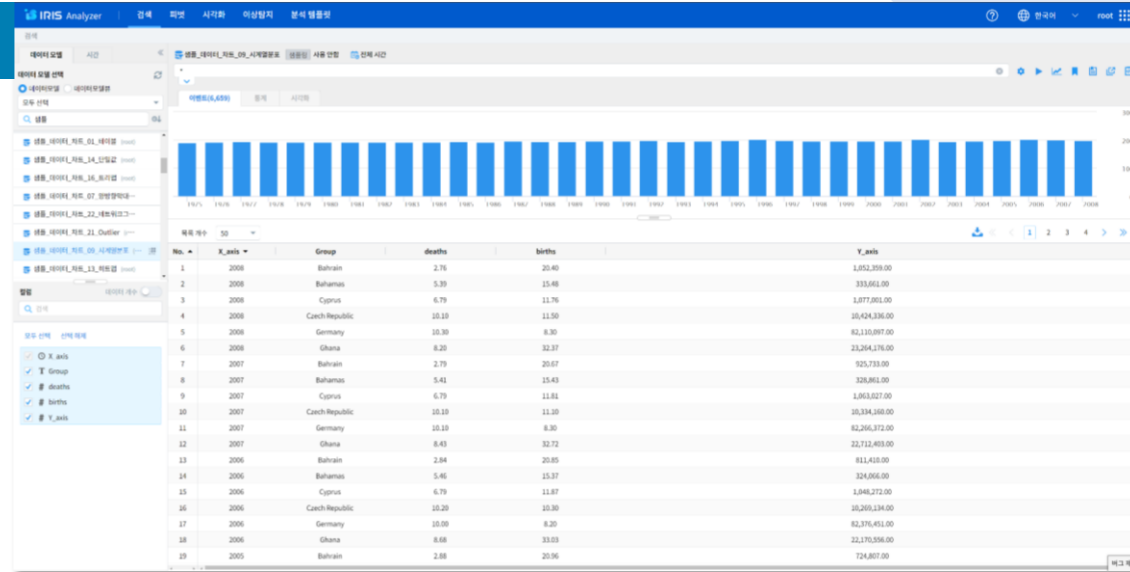


Exploratory Data Analysis

Analyzer

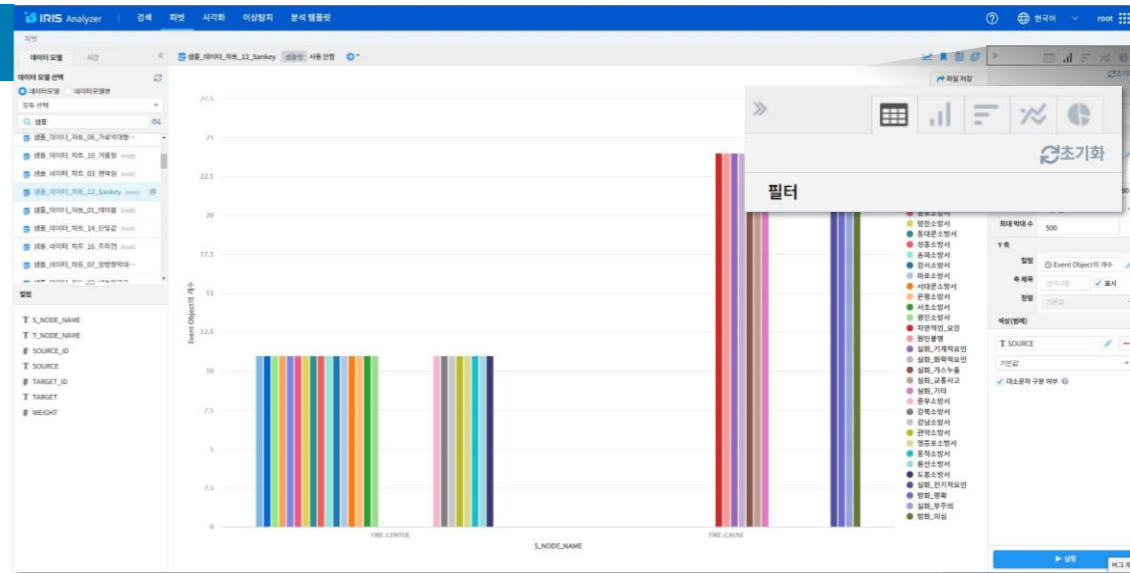
Data exploration and pre-processing

- Accessing data directly and extract the data, transforming raw data into an efficient format for analysis
- Providing various search options and commands for search keywords or full text in terabytes of data
- Shows statistical tables and charts of search results



Data pivoting analysis

- Perform simple calculations and output results in a table by reordering rows and columns of data.
- Show the output from the table in various chart types and customize each chart with detailed options

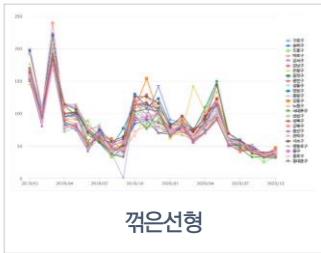
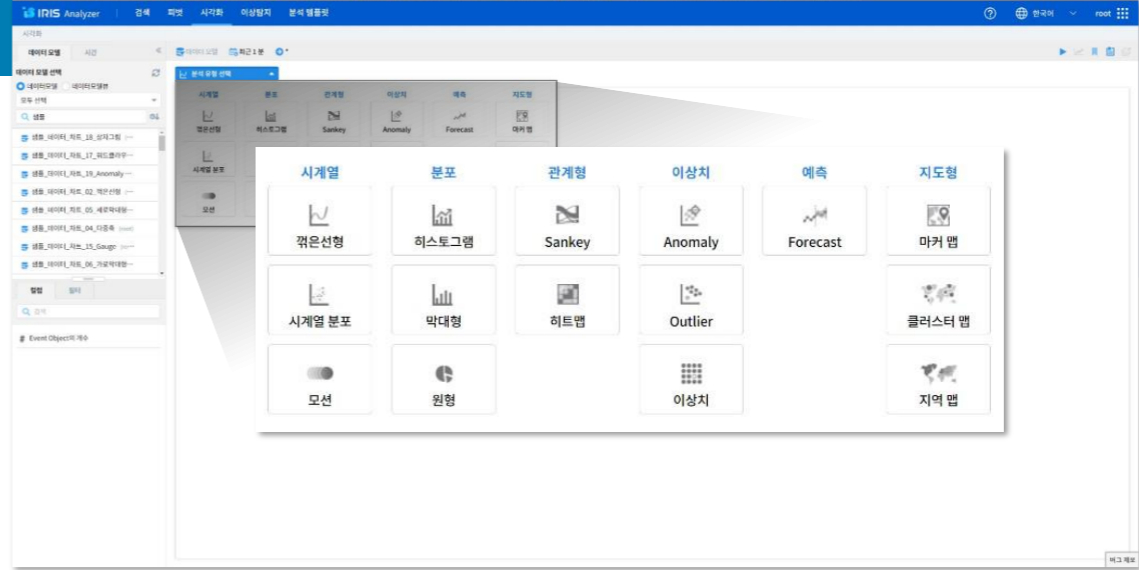


Exploratory Data Analysis

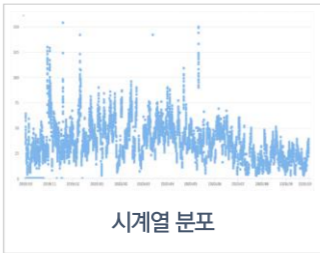
Analyzer

Various visualization of data

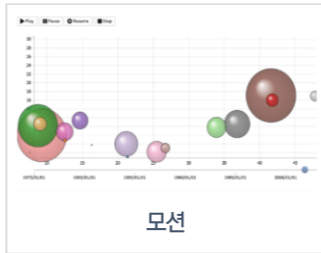
- User-friendly interface enables analysis without complex commands
- A variety of charts and graphs with detailed options
- Categorized into 6 types of analysis, providing typical charts in each group.



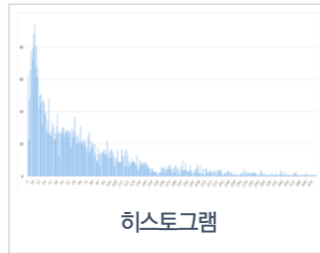
꺾은선형



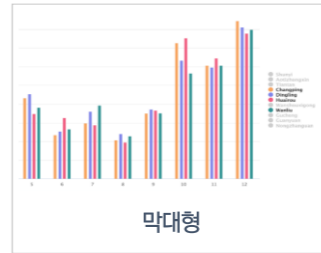
시계열 분포



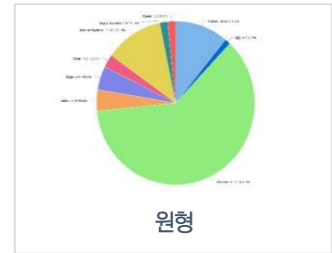
모션



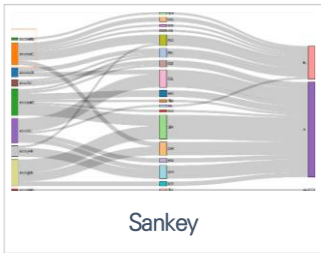
히스토그램



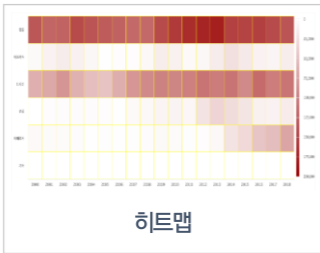
막대형



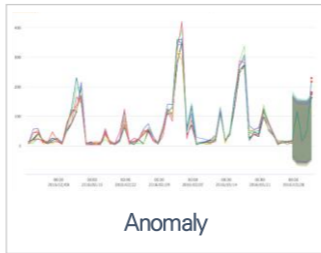
원형



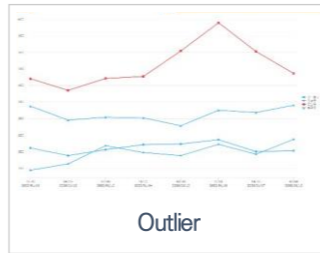
Sankey



히트맵



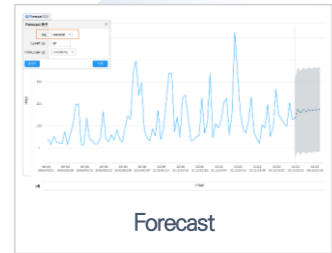
Anomaly



Outlier



이상치



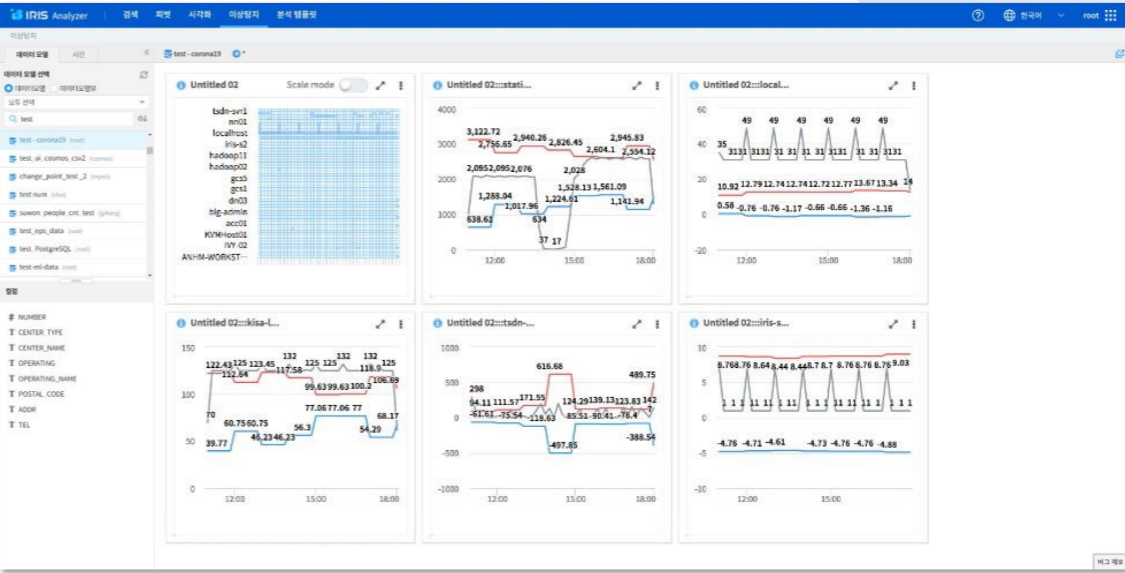
Forecast

Exploratory Data Analysis

Analyzer

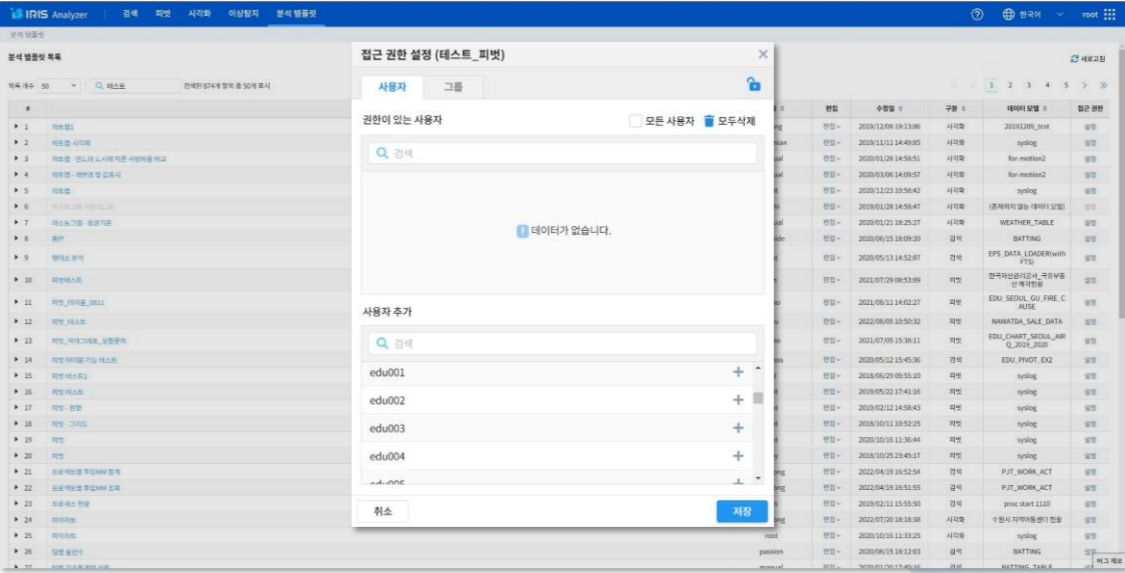
Anomaly detection for your data

- Detect outliers using various options and algorithms within your specified data and time range.
- Create anomaly heatmap and threshold chart for lookup period vs. past reference data.



Templates for results and visualizations

- Providing templates for search criteria and various settings in the analytics screen
- View and editing grant access to user and data model information in the list of analytics templates



Visualization report and dashboard

Studio

Tools that make it easy for anyone to create dashboards and analysis reports with a variety of visualizations

Build user-defined dashboards and reports

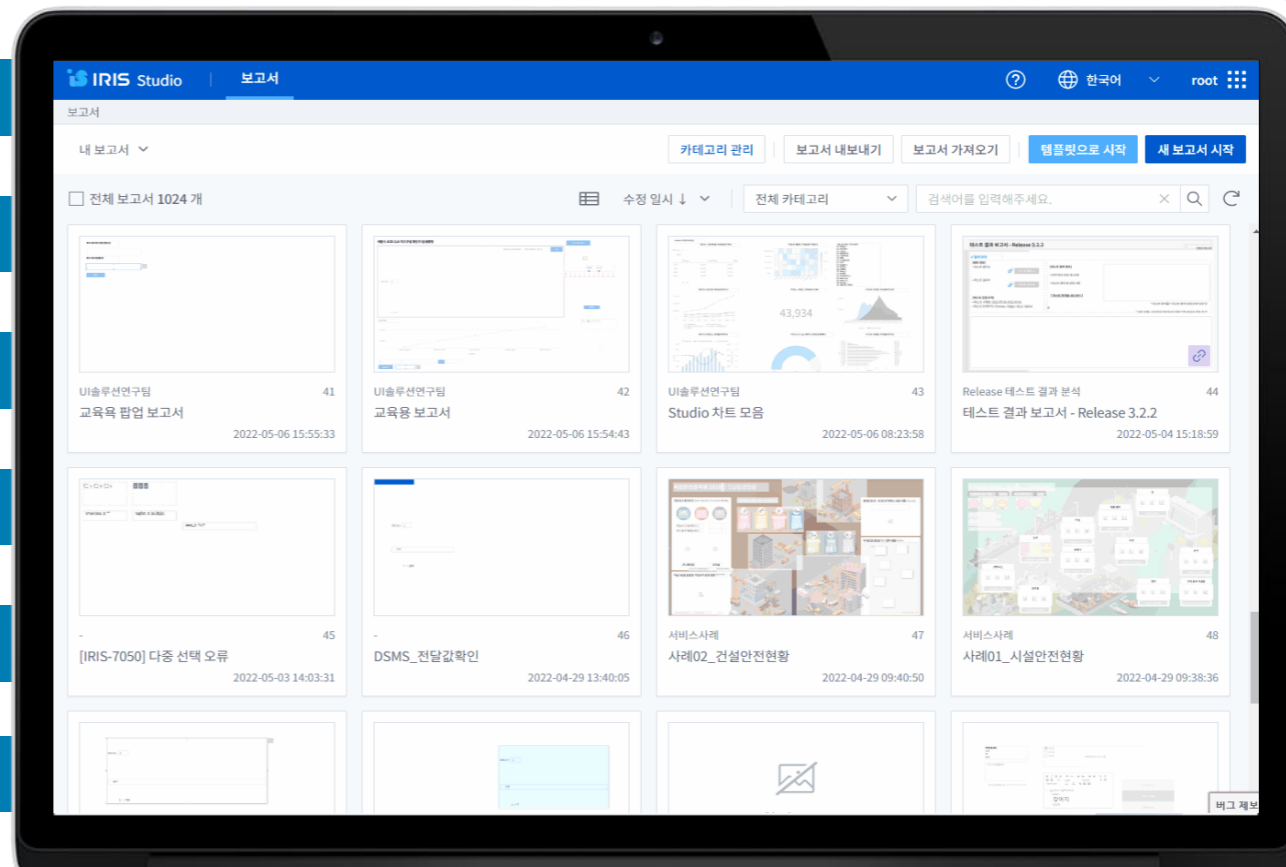
Visual components for dynamic reports

A variety of data visualization types

Data visualization on maps

Managing and sharing created reports

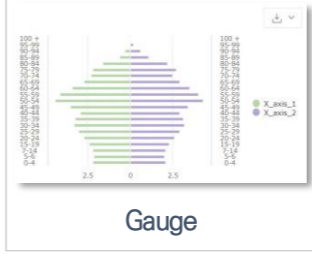
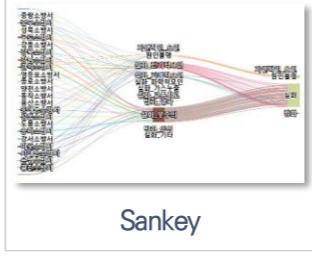
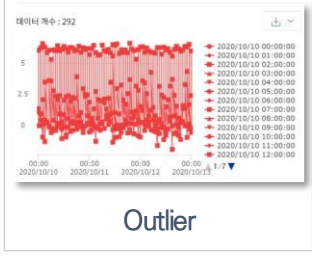
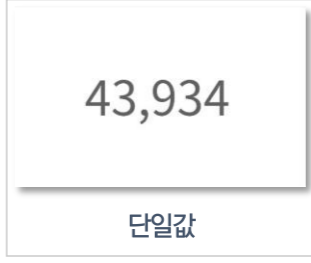
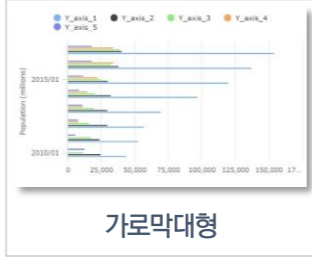
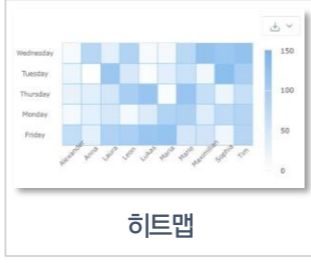
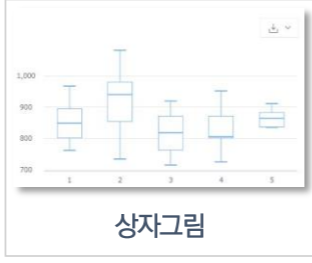
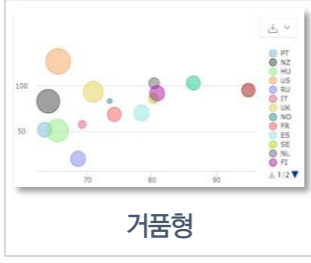
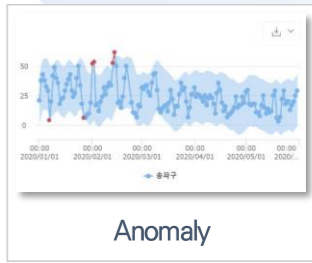
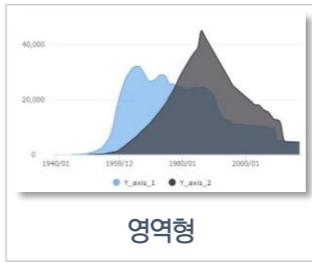
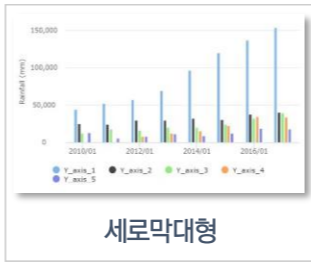
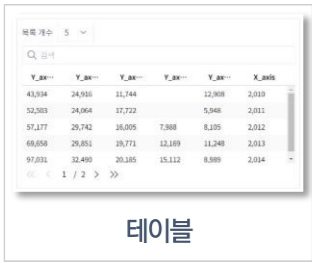
Managing users and groups



Visualization report and dashboard

Studio

Providing a variety of charts and graphs



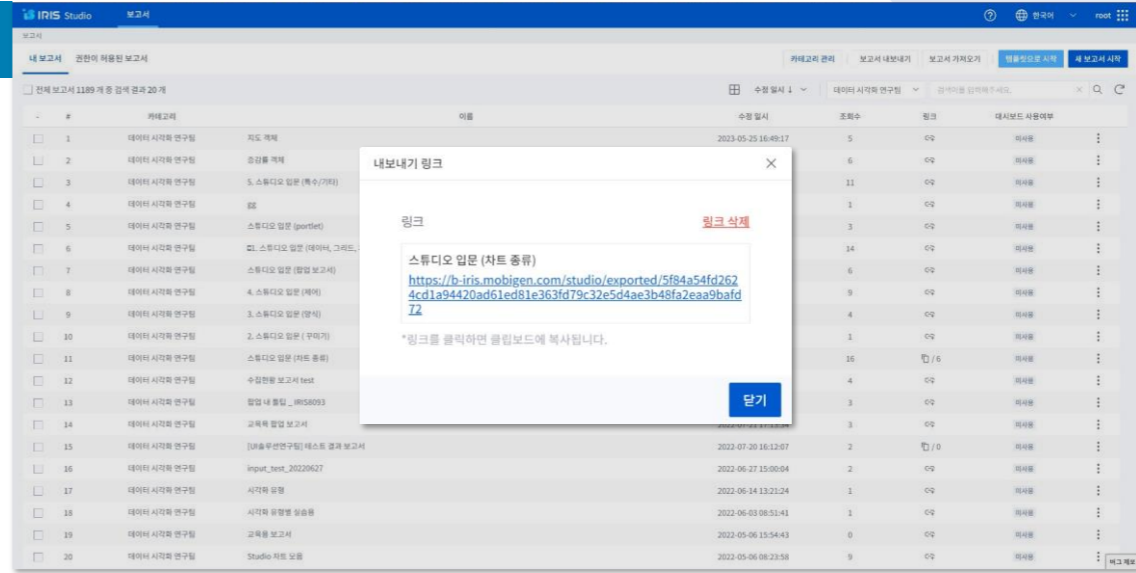
etc ...

Visualization report and dashboard

Studio

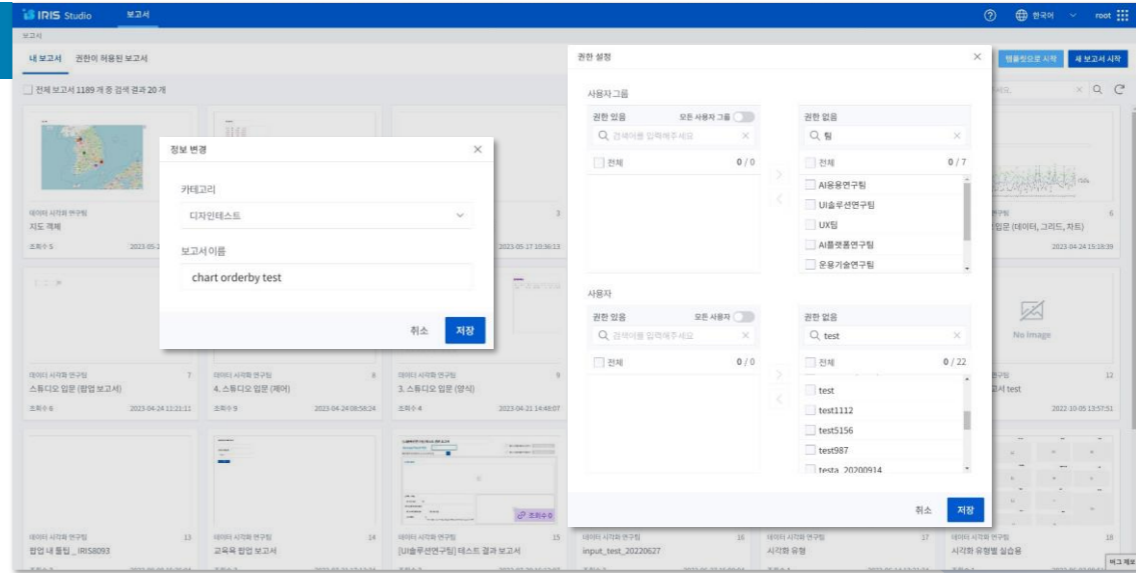
Managing reports and sharing with URL

- Import JSON-formatted reports from Analyzer or Map Analyzer and convert them into visualization reports
- Save the created report in JSON format via the exporting
- Create a shared URL of the report for external users



Data and report access management

- Categorize reports and access permissions to user and group
- Change the owner of report



Geospatial analytics

Map Analyzer

Spatial data analysis tool to visualize and analyze data on a map

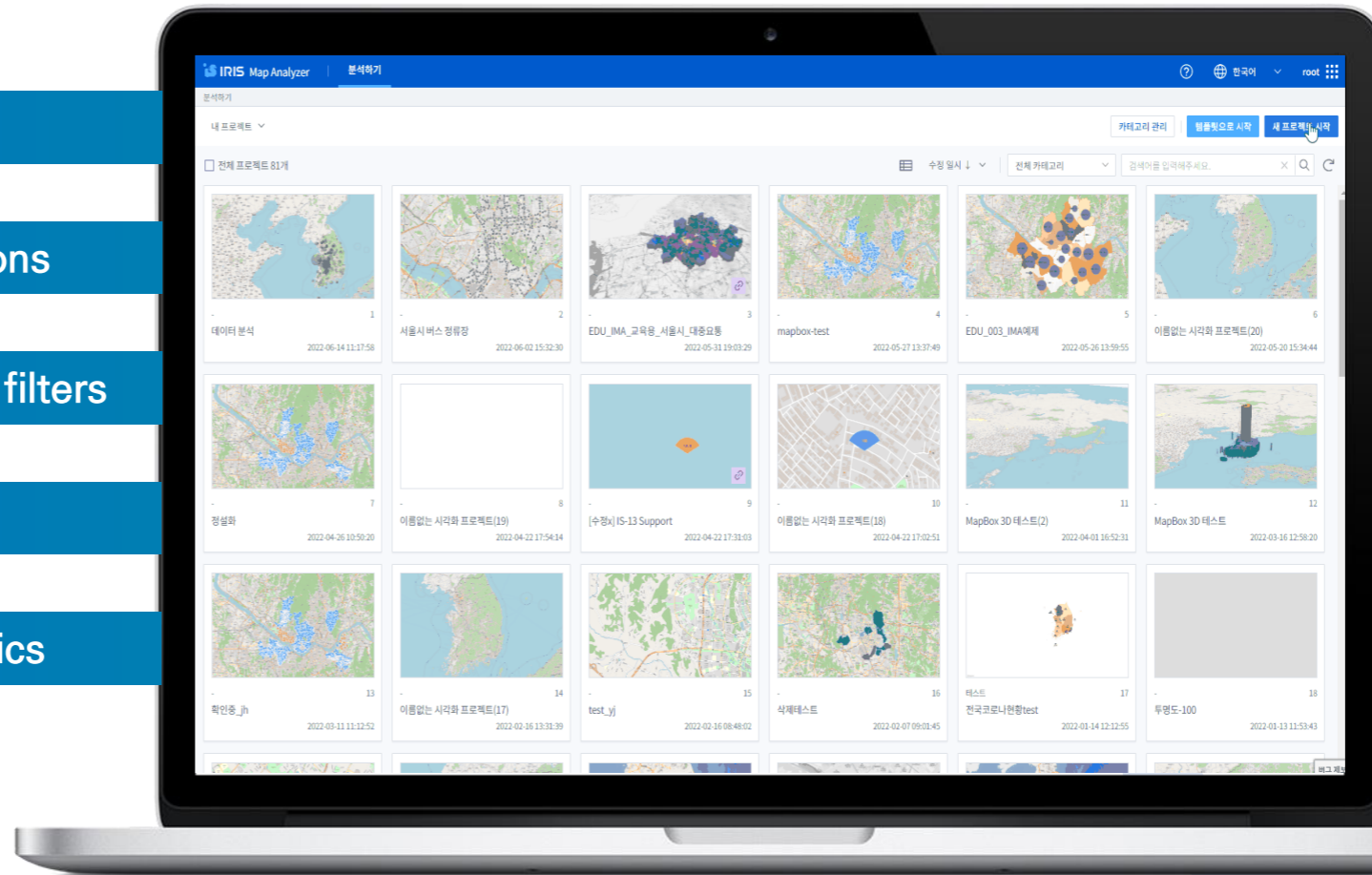
Easy to use spatial data mapping

Interactive spatial data visualizations

filtering data with spatial analysis filters

Supports various base map

User-friendly UI for spatial analytics

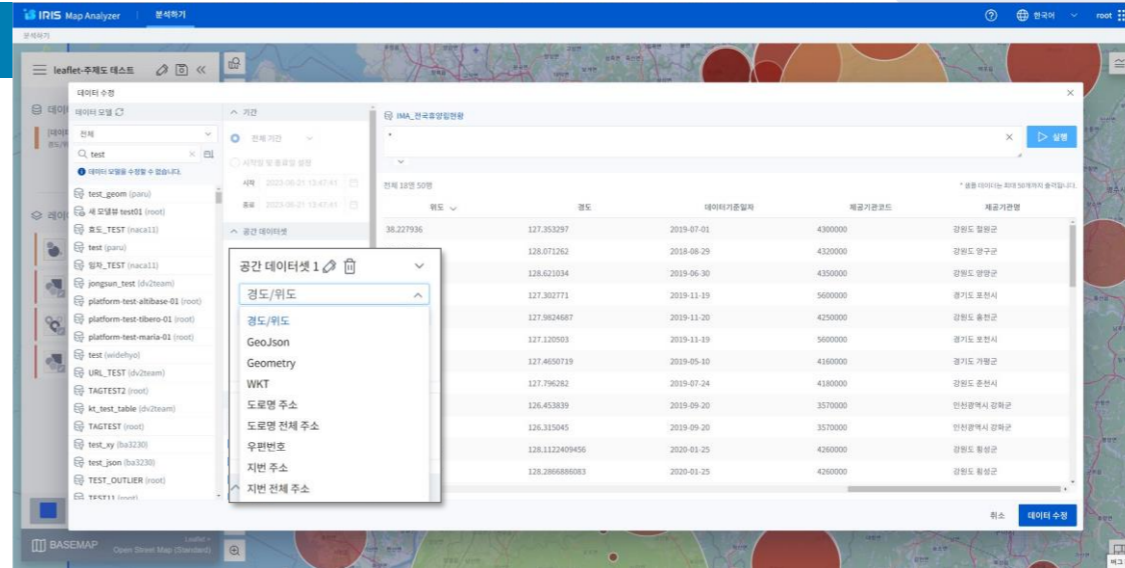


Geospatial analytics

Map Analyzer

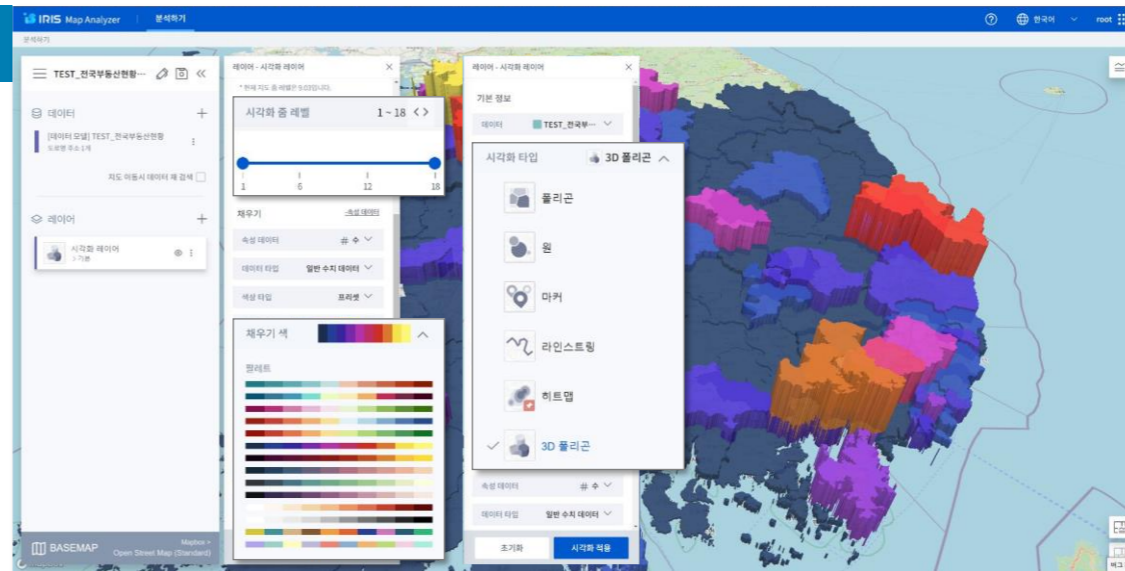
Easy to use spatial data mapping

- Automatically convert location data from registered models to GeoJSON for map visualization
 - Latitude, longitude, WKT, street address, zip code, etc.
- It is possible to generate multiple spatial data, and the order of latitude and longitude can be modified.
- Applying DSL syntax can convert multiple geo and statistical data to various formats



Interactive spatial data visualizations

- Customize the visualization of data on a map through layer settings
- Components type to represent cadastral maps, 3d polygons, circles, markers, heatmaps

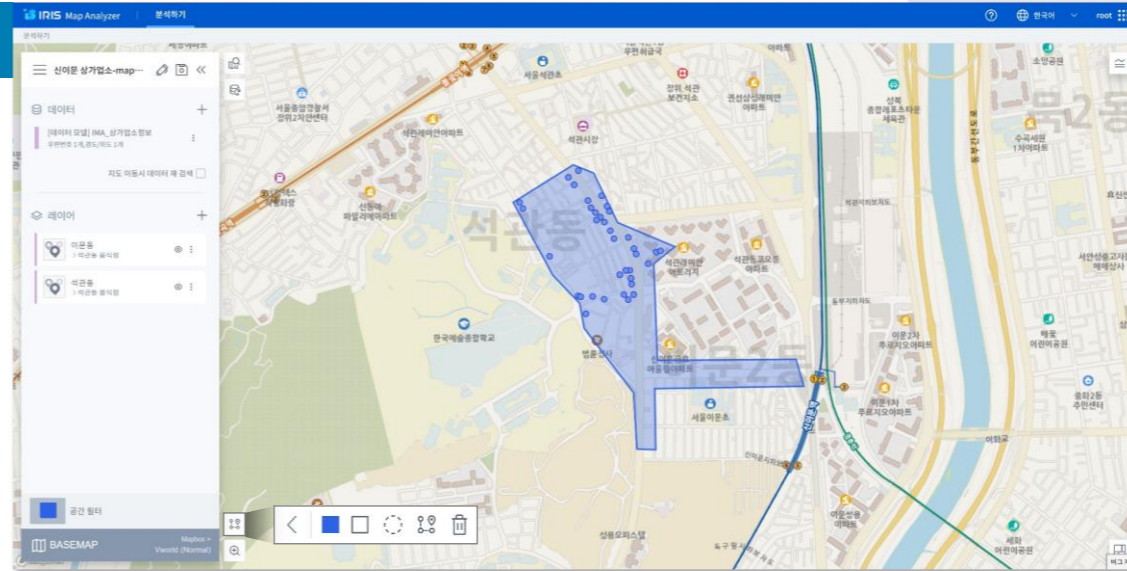


Geospatial analytics

Map Analyzer

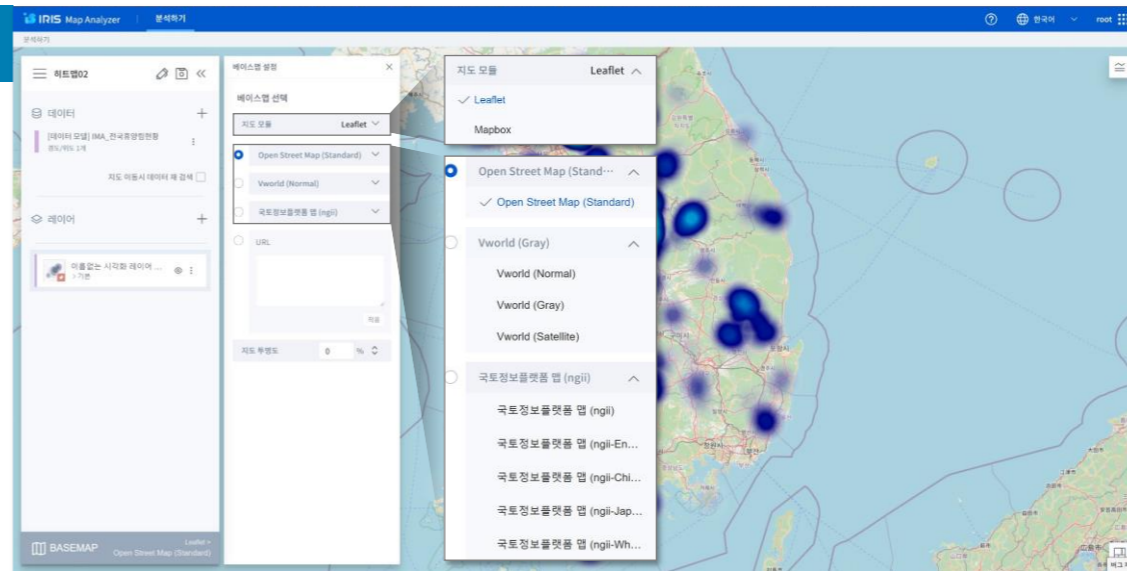
filtering data with spatial analysis filters

- 지리 데이터에서 원하는 지역을 선택하거나 특정 기준에 따라 데이터를 필터링
- 지도 위에 사용자가 원하는 형태의 점/선/면 형태의 시각화 요소를 직접 표현 할 수 있으며, 위치 데이터로 변환하여 데이터를 다운로드 가능



Supports various base map

- Supports a variety types of base maps, with Leaflet and Mapbox modules
- Leaflets and Mapbox support Open Street Map, Vworld, URL direct.

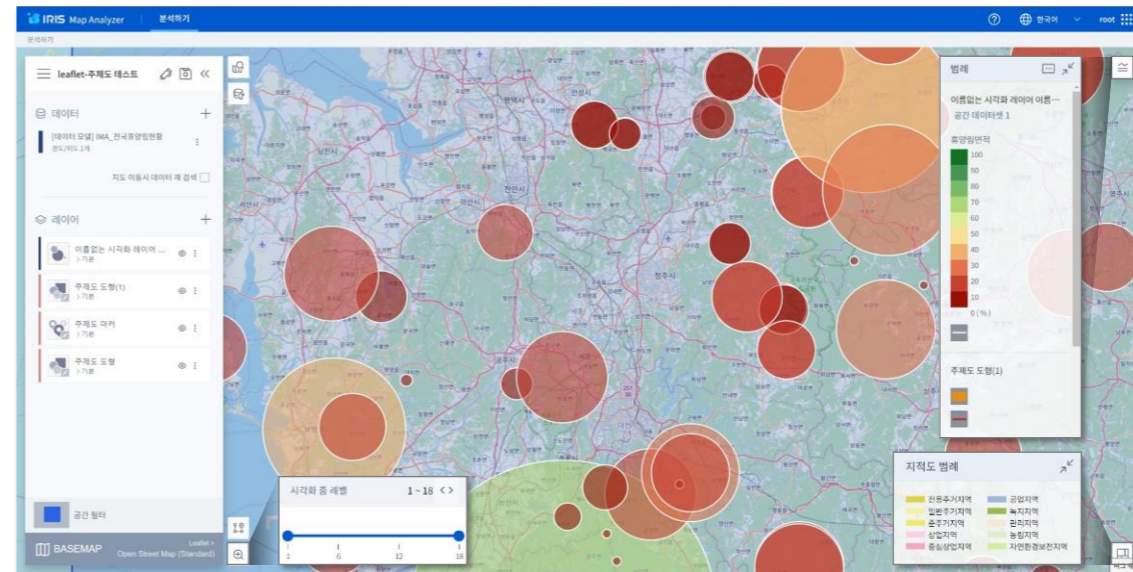
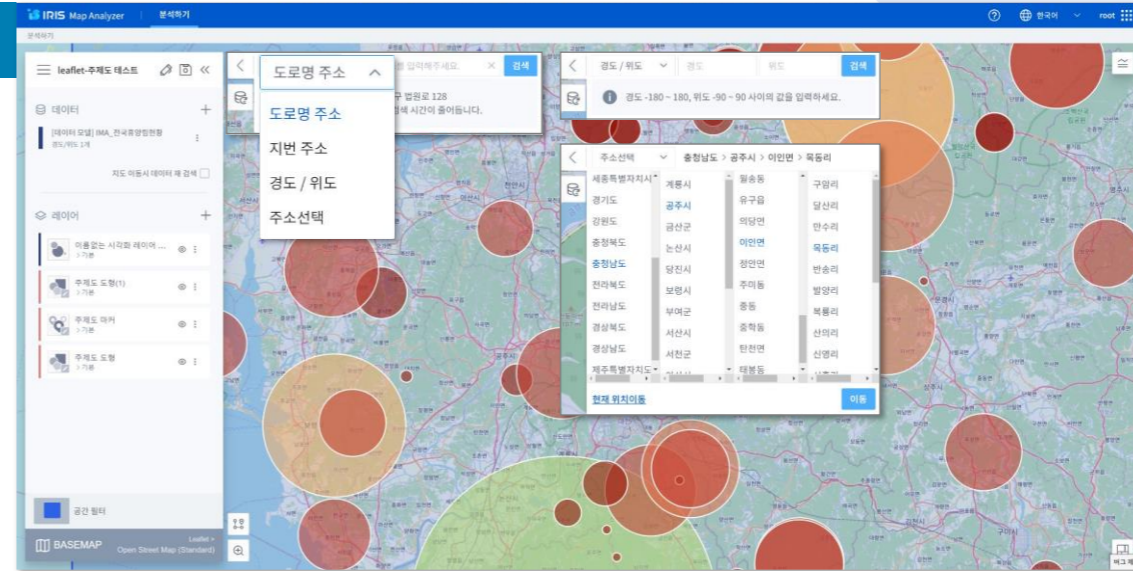


Geospatial analytics

Map Analyzer

User-friendly UI for spatial analytics

- Find a location through address, postal code, street name, or search by longitude and latitude
- Zoom in & out
- Multi layers to show information
- Cadastral map



Configuration & Management IRIS Manager

Integrated management of big data platform operational-level services

User and Account management



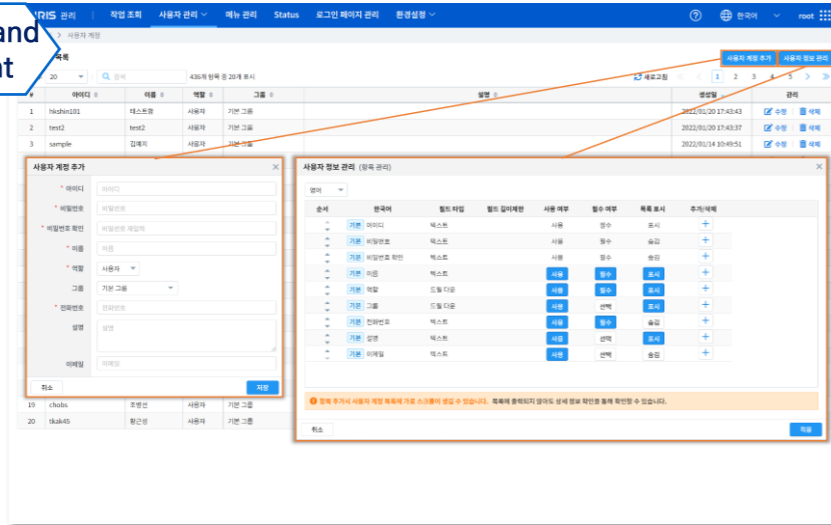
- 1 Help
- 2 UI locale settings
- 3 User features
- 4 User defined Home
- 5 Dashboard
- 6 Account information
- 7 Logout
- 8 List of dashboards

- 1 Image change in Home (Favicons, logos, and background images)
- 2 Background description
- 3 Login form description
- 4 SignIn button activate/deactivate
- 5 Color settings
- 6 Copyrights wording and description

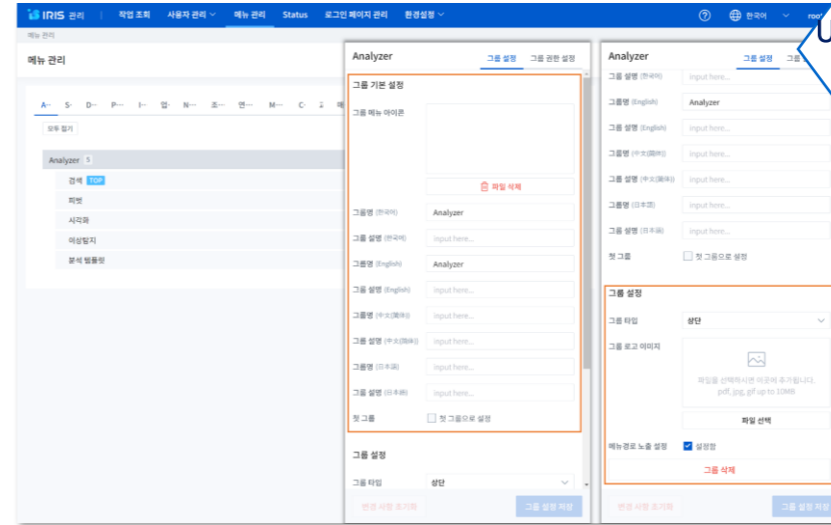
Configuration & Management IRIS Manager

User/group management and usage history

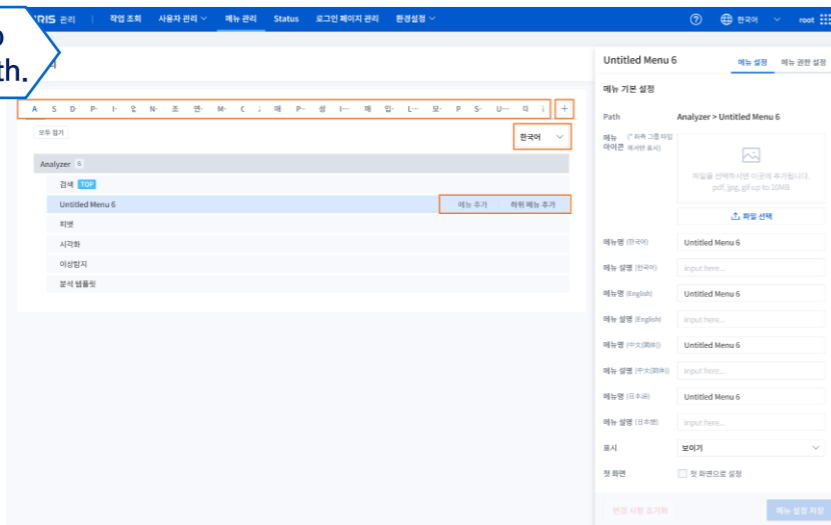
User registry and management



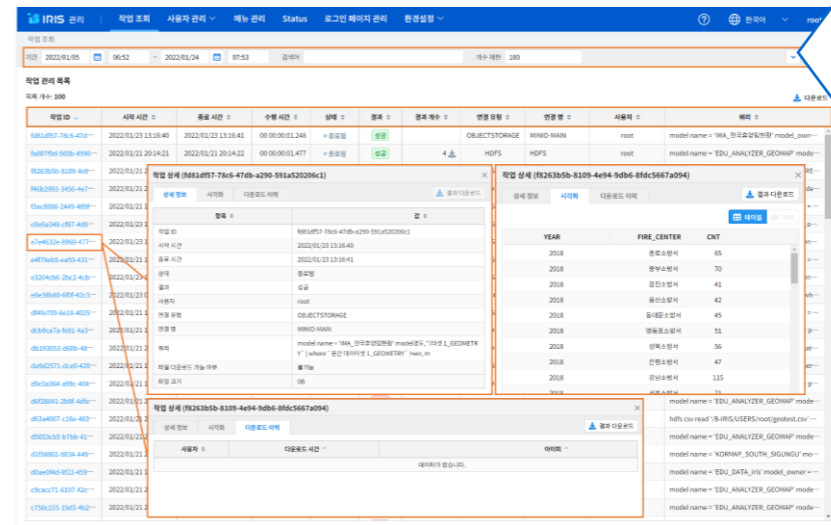
User/Group grant access mgmt.



User/Group Menu and auth.



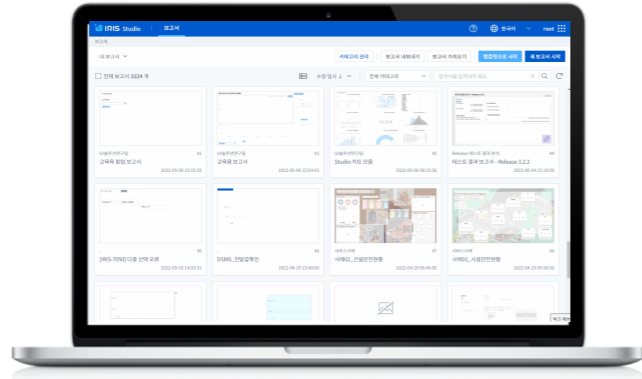
Usage monitoring



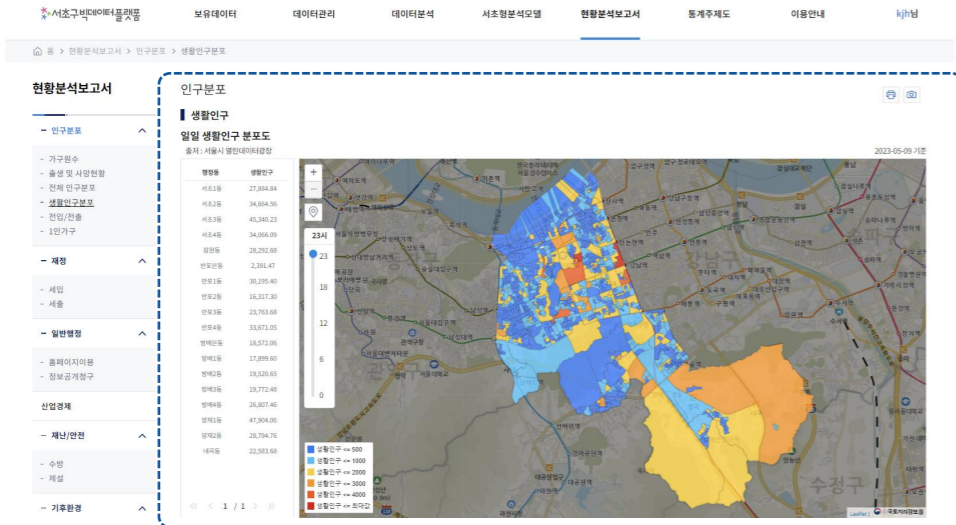
Use Cases

Introducing customers and Best Practice cases

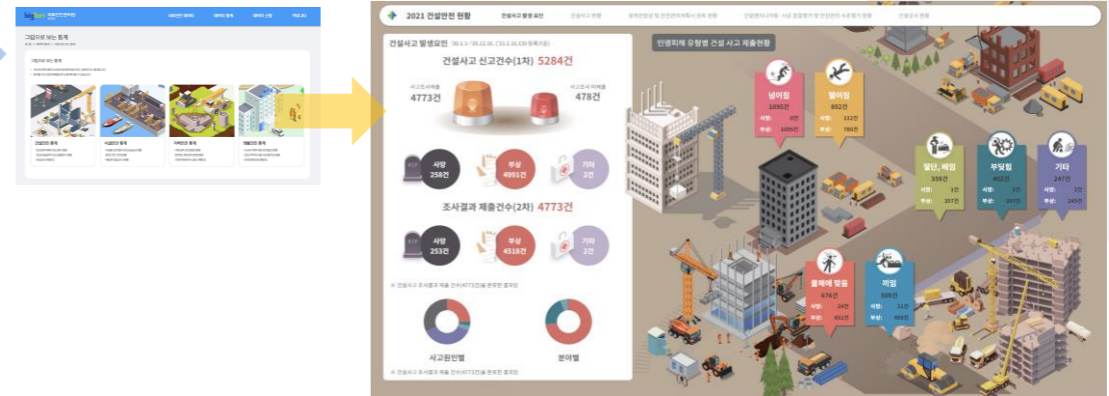
Applies to dashboards, display within portals, stand-alone deployment using the IRIS VDAP visualization tool



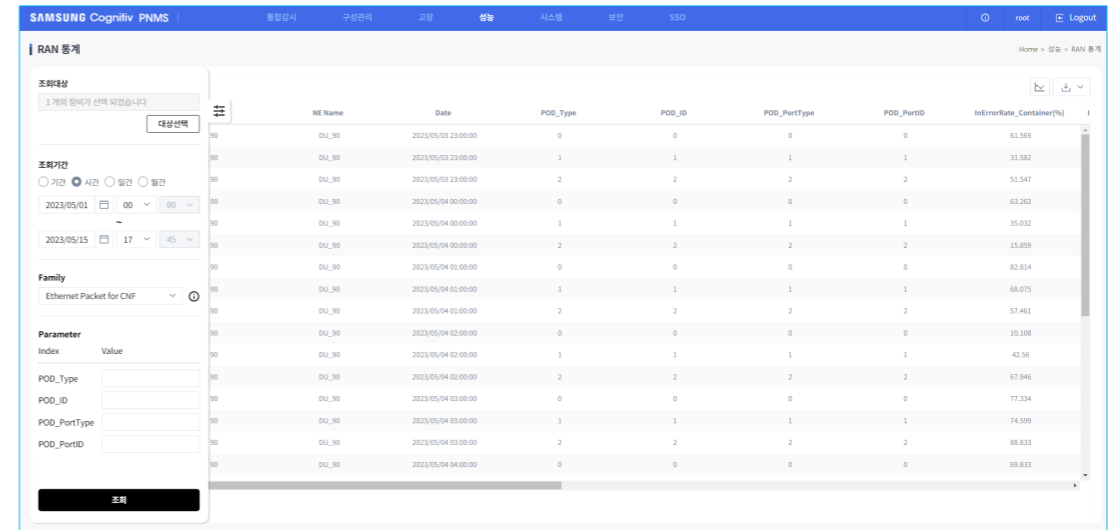
Display within a web page



Dashboard

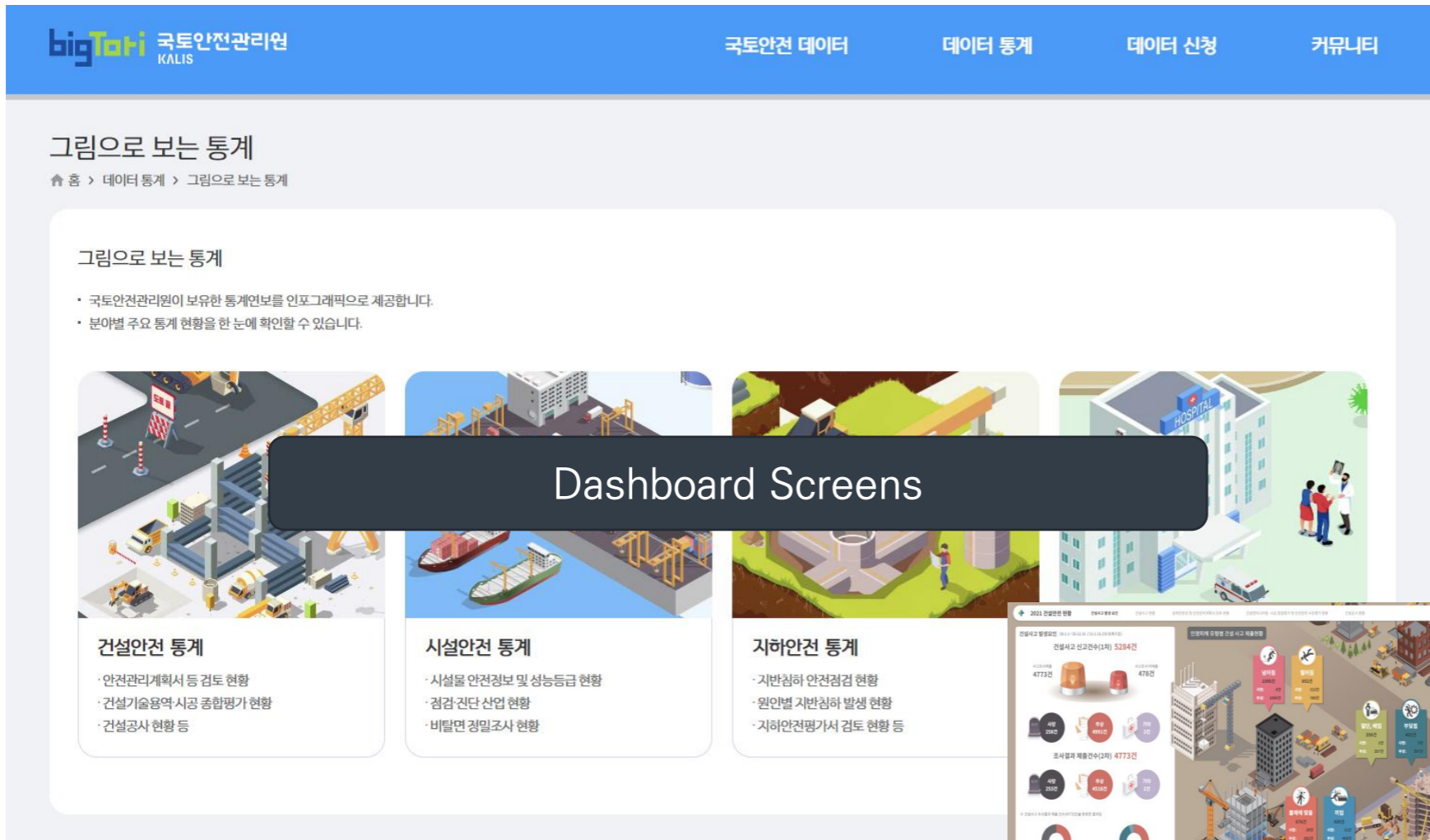


Stand-alone deployment



Implemented four dashboard screens of “Statistics in Pictures” from the Korea Authority of Land & Infrastructure Safety’s BigTory site using IRIS Studio

Statistics dashboard at bigTori website by the Korea Authority of Land & Infrastructure Safety



Dashboard Screens



Implemented major statistics visualization services on the bigdata portal of Seocho-gu Office using IRIS Studio

Bigdata portal service screens by Seocho-gu Office

Seocho-gu Bigdata Portal

메뉴: 서초구빅데이터플랫폼 | 보유데이터 | 데이터관리 | 데이터분석 | 서초형분석모델 | **현황분석보고서** | 통계주제도 | 이용안내 | kjh님

주소: 서울특별시 서초구 서초1동

현황분석보고서

- 인구분포
 - 가구원수
 - 출생 및 사망현황
 - 전체 인구분포
 - 생활인구분포**
 - 전입/전출
 - 1인가구
- 재정
 - 세입
 - 세출
- 일반행정
 - 홈페이지이용
 - 정보공개청구
- 산업경제
- 재난/안전
 - 수방
 - 제설
- 기후환경

인구분포

생활인구

일일 생활인구 분포도

출처: 서울시 열린데이터광장

2023-05-09 기준

행정동	생활인구
서초1동	27,884.84
서초2동	34,664.56
서초3동	45,340.23
서초4동	34,066.09
반포3동	23,763.68
반포4동	33,671.05
방배본동	18,572.06
방배1동	17,899.60
방배2동	19,520.65
방배3동	19,772.48
방배4동	26,807.46
양재1동	47,904.06
양재2동	28,794.76
내곡동	22,583.68

Legend: 생활인구 <= 500, 생활인구 <= 1000, 생활인구 <= 2000, 생활인구 <= 3000, 생활인구 <= 4000, 생활인구 <= 최대값

Visualization of Major Indicators

이 화면은 다양한 데이터 시각화 서비스를 보여줍니다. 주요 구성 요소는 다음과 같습니다:

- 지리적 분포도: 지역별 데이터 분포를 보여주는 지도.
- 시계열 그래프: 시간에 따른 데이터 추이를 보여주는 선 그래프.
- 막대 그래프: 범주별 데이터 비교를 위한 막대 그래프.
- 다중 차트: 여러 데이터를 한 화면에 통합하여 보여주는 복합 시각화.

Implemented PNMS statistical inquiry and management functions for Samsung with IRIS Studio

Samsung's 5G PNMS screens

NE Name	Date	POD_Type	POD_ID	POD_PortType	POD_PortID	InErrorRate_Container(%)
DU_90	2023/05/03 23:00:00	0	0	0	0	61.569
DU_90	2023/05/03 23:00:00	1	1	1	1	31.582
DU_90	2023/05/03 23:00:00	2	2	2	2	51.547
DU_90	2023/05/04 00:00:00	0	0	0	0	63.262
DU_90	2023/05/04 00:00:00	1	1	1	1	35.032
DU_90	2023/05/04 00:00:00	2	2	2	2	15.859
DU_90	2023/05/04 02:00:00	2	2	2	2	67.946
DU_90	2023/05/04 03:00:00	0	0	0	0	77.334
DU_90	2023/05/04 03:00:00	1	1	1	1	74.599
DU_90	2023/05/04 03:00:00	2	2	2	2	88.833
DU_90	2023/05/04 04:00:00	0	0	0	0	69.833

Korea Authority of Land & Infrastructure Safety, Big Data Open Portal for Land Safety

Statistical status services by field such as construction safety, facility safety, underground safety and living safety

<https://bigtori.kalis.or.kr>



Korea Authority of Land & Infrastructure Safety, Keyword Analysis of Public Issues

- Dashboard to see at a glance the it's policies and service-related public reputation
- Analyzes social data to visualize positive/negative analysis results and related keyword analysis results
- Utilizes social data analysis to evaluate and analyze the importance, urgency, and solution potential by policy or issue

<https://bigtori.kalis.or.kr>



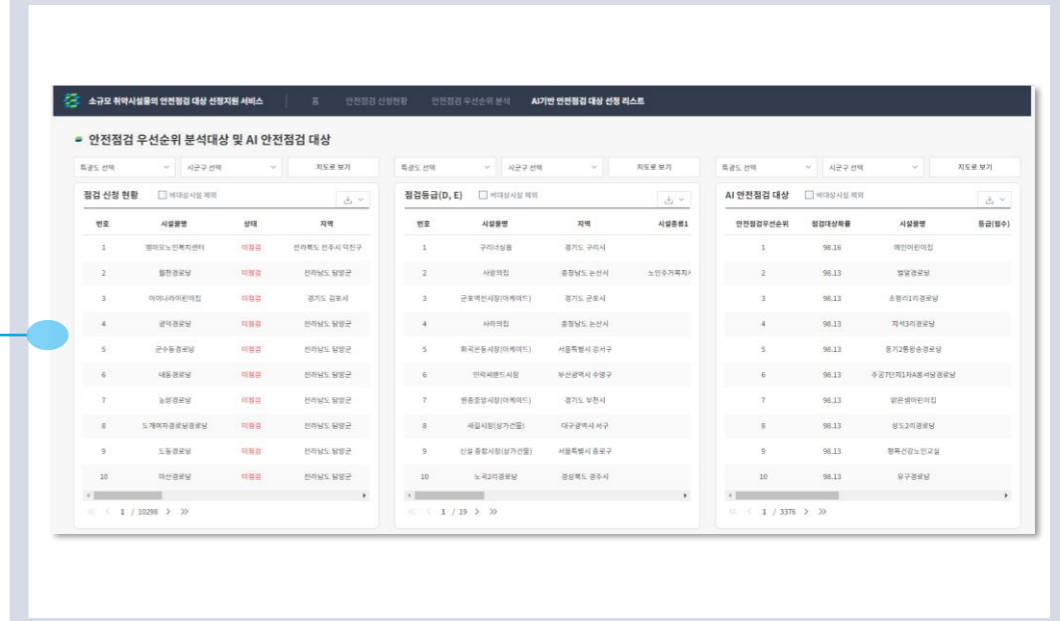
Korea Authority of Land & Infrastructure Safety, Analysis Service for the Bridge Damage Factors

- Analyzes and visualizes AI-based bridge damage factors using real-time IoT data generated from Jindo Bridge
 - Support for decision-making in maintenance of special bridges and strengthening preemptive prevention
- *IoT data: seismometer, anemometer, cable accelerometer, dynamic strain gauge, etc.



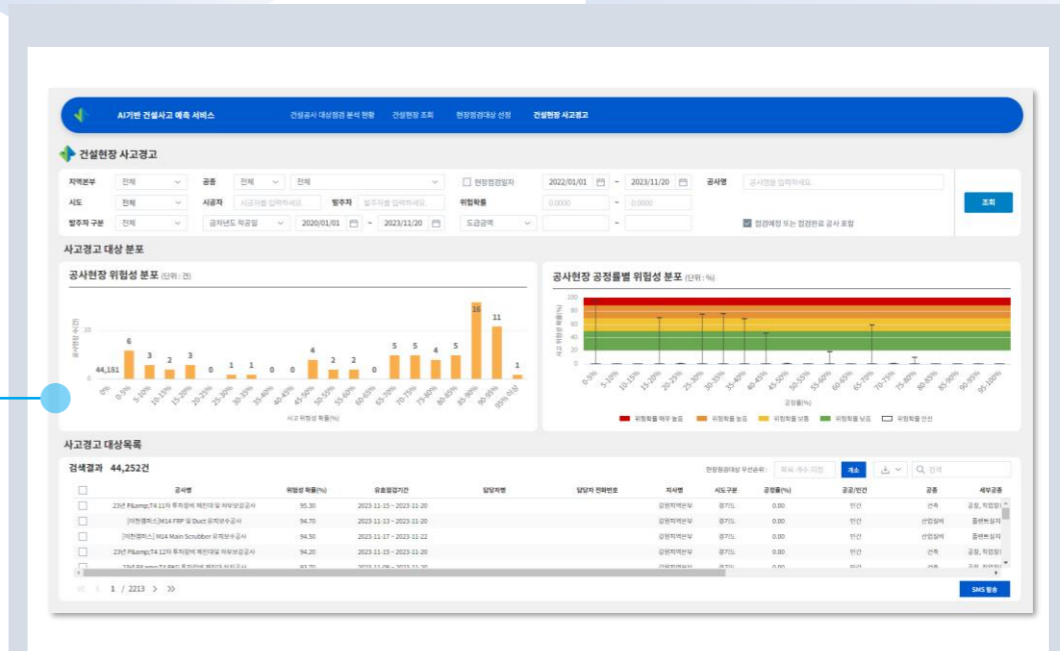
Korea Authority of Land & Infrastructure Safety, Selection of Target for the Safety Inspection from Small Vulnerable Facilities

AI Analysis of small vulnerable facilities to identify safety inspection targets and derive priority management targets for improving work efficiency



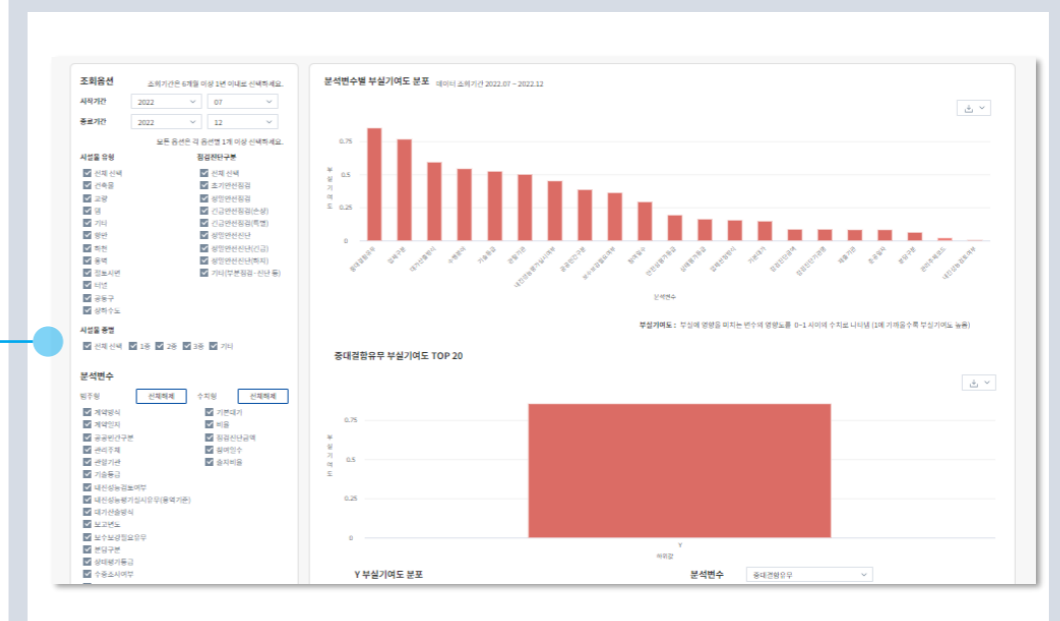
Korea Authority of Land & Infrastructure Safety, AI-based Construction Accident Prediction Service

- Support to select construction site inspection targets with high safety risk by analyzing construction site data
- Analyzes the accident time, occurrence frequency, and severity of accident of the risk factor profile
- Support for the preemptive accident prevention through the pre-accident warning notifications by automatically classify them according to the stage of construction at the construction site



Korea Authority of Land & Infrastructure Safety, Derivation of Factors Contributing to the Inappropriateness Rate of Inspection and Diagnostic Evaluation

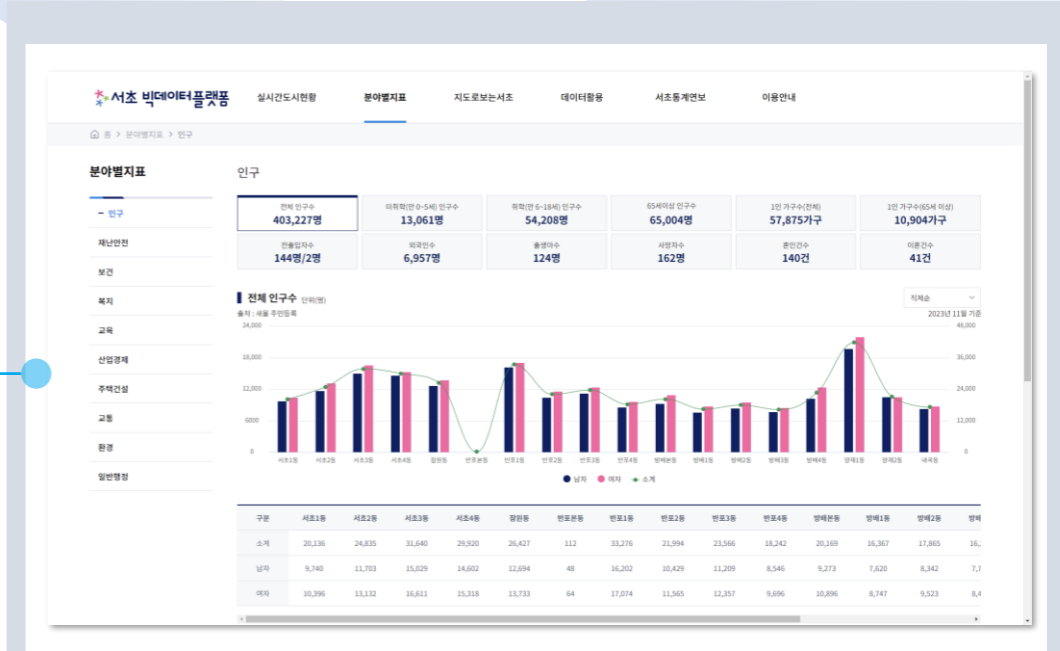
- Provides a service that derives factors contributing to the inappropriate rate by utilizing inspection and diagnostic evaluation data
- Used as basis for correcting inadequacy rates and improving guidelines



Secho-gu Office, Indicator Analysis by Field

– Enable data-driven administration by making statistics easy to understand for the officers and citizens

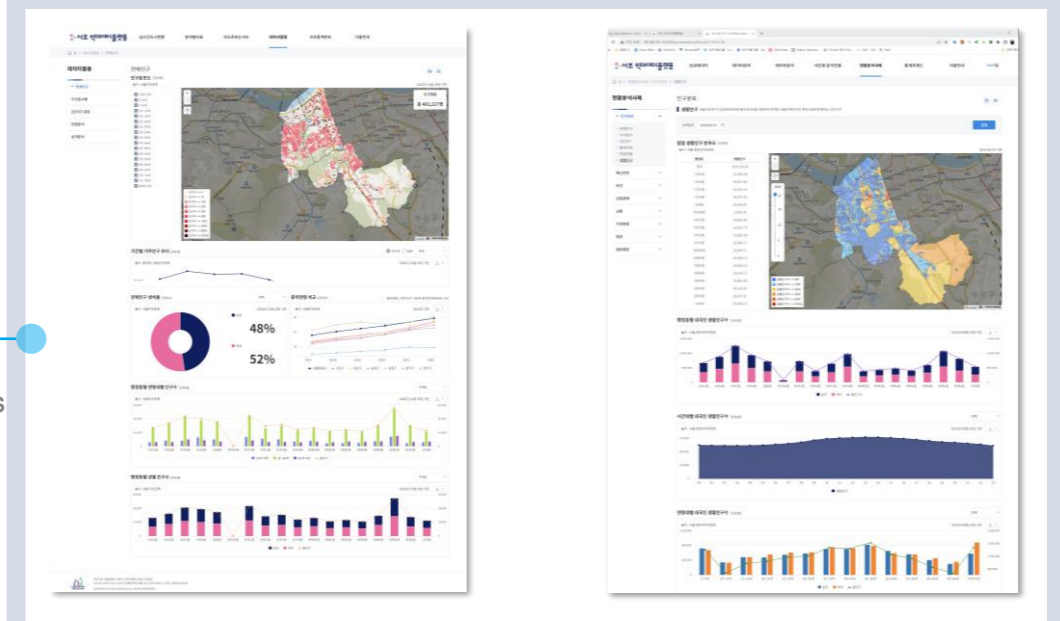
<https://bigdata.secho.go.kr>



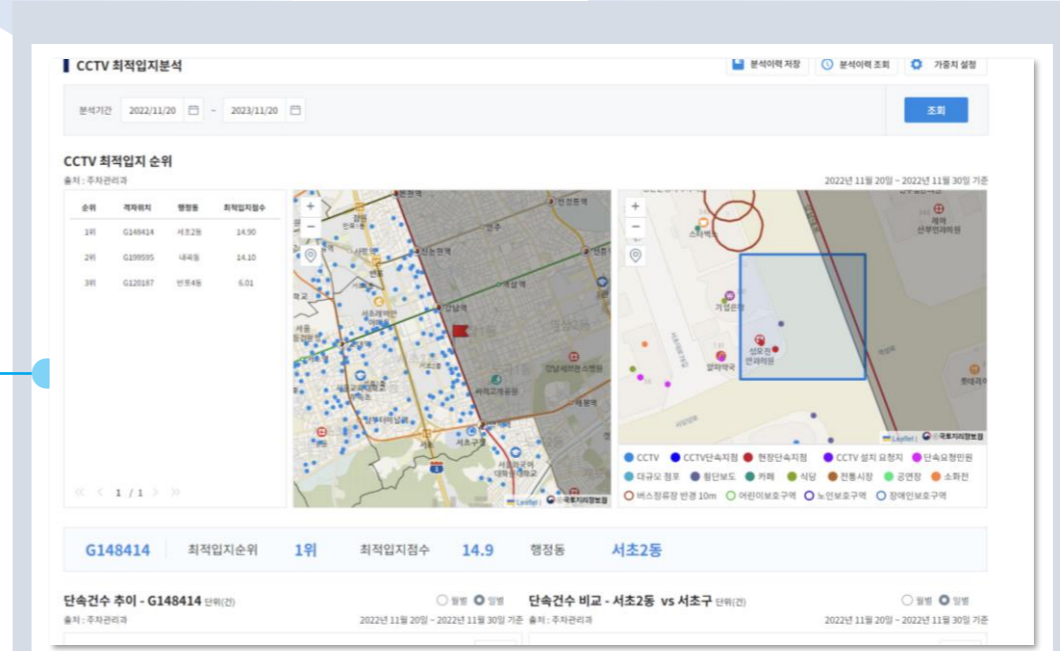
Secho-gu Office, Demographic Dashboard

– Provides statistical data on the total population, household sizes, and distribution of single-person households through maps and various charts.

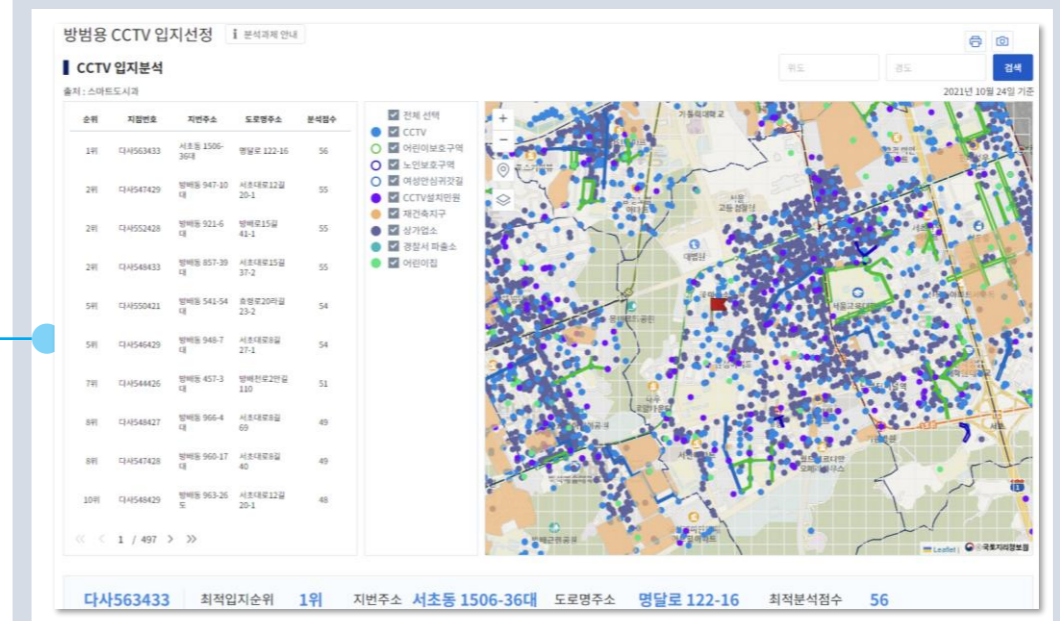
<https://bigdata.secho.go.kr>



Seochog-gu Office, CCTV Location optimization for Monitoring Parking violations



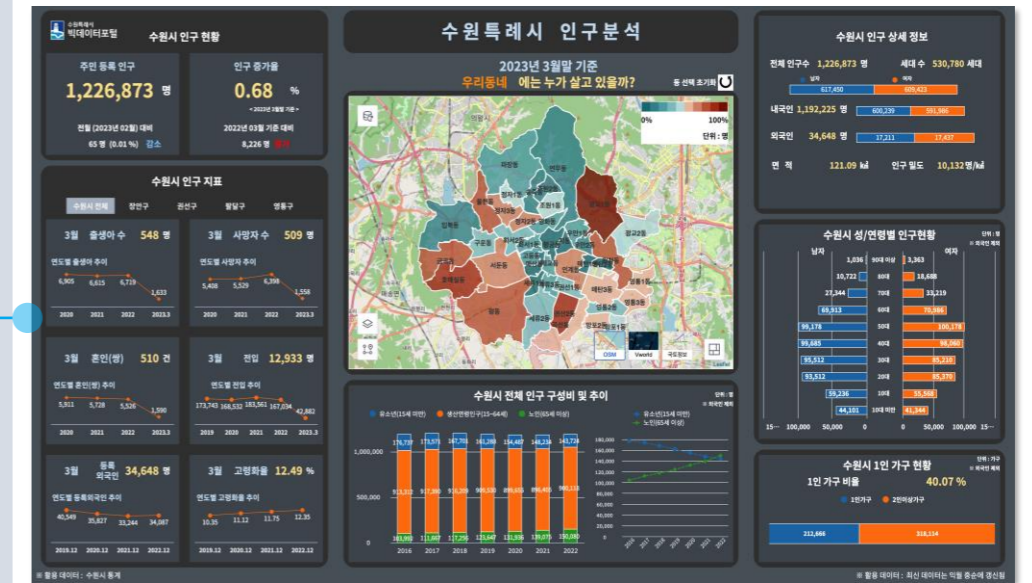
Seochog-gu Office, CCTV Location optimization for Crime Prevention



Suwon City, Analysis of the Policy Information Status at Bigdata Portal

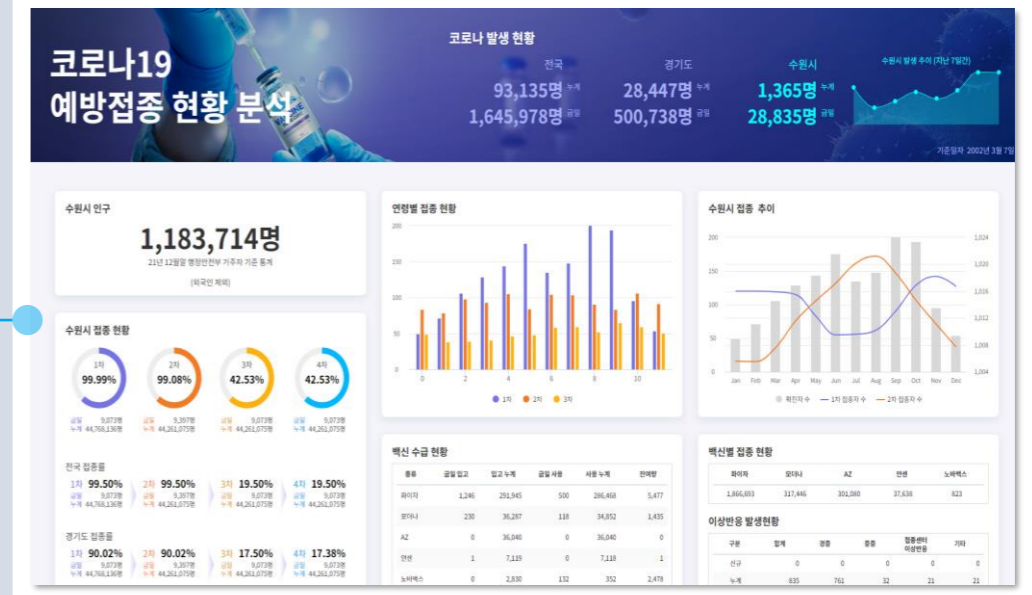
– Provides information that analyzes and visualizes various public data of Suwon City

<https://data.suwon.go.kr>



Suwon City, Analysis of Corona Vaccination Status & Visualization

– Display data in easy-to-understand visual formats like charts, graphs, and maps



Ministry of Land, Infrastructure and Transport, Status Report on the Illegal Supply and Demand of Oil Subsidies

<https://data.molit.go.kr>

유가보조금 부정수급 추이 분석

제공기관	국토교통부	키워드	#유가보조금 #부정수급 #복지
------	-------	-----	------------------

개요

화물·버스·택시 차량에 대하여 국가의 유가보조금 지급과 부정수급 현황 및 연도별 추이를 분석한다.

- 유가보조금이란?
화물자동차 및 여객자동차에 유류세 인상액에 상당하는 금액의 전부 또는 일부를 보조하기 위해 유류사용량을 기준으로 지급되는 보조금
- 유가보조금 지급 대상
 - 여객자동차운수사업법령에서 정하고 있는 업종 중
 - 버스: 시내, 시외, 고속, 농어촌 마을버스
 - 택시: 법인 개인택시
 - ※ 법인 택시 중 영의이용금지원(지입제 경영)차량은 보조금 지급대상에서 제외
 - 화물자동차운수사업법에 의해 화물자동차운수사업에 등록된 차량

유가보조금 부정수급 관리강화를 위한 노력

- 유가보조금 부정수급 현황 685건 적발 ('19년 11월 ~ '20년 4월)
 - 영입을 최종차량에 지원되는 유가보조금을 차감으로 받는 등 685건 적발
 - 데이터 기반을 부정수급 적발에 적용하여 다수 부정수급 적발
- 유가보조금 부정수급 방지를 위한 다양한 홍보 활동 강화 중
 - 전국화물자동차운수사업협회 등 화물 단체들과 부정수급 방지 홍보 활동 강화
 - 지자체, 교통안전공단 등 부정수급 방지 교육을 포함과 사전예방 활동 중

부정수급 예방을 위한 지속적인 유가보조금 지급현황과 부정수급 분석 서비스 제공 필요

유가보조금 부정수급을 범죄라는 인식 전환을 위한 지속적인 추이 분석 서비스 필요하며, 실제로 데이터 분석기법 적용 발표 이후 '19년 11월 170건 → '20년 4월 64건으로 감소했다.

• 유가보조금 지급 현황

table. 연도별-차종별 유가보조금 현황

연도	유가보조금 합계	화물_사용액	화물_승인금액	화물_유가보조금	택시_사용액	택시_승인금액	택시_유가보조금	버스경량
2017년	2,579,889,913.00	5,185,557,504.00	6,424,690,163.00	1,773,620,035.00	2,317,503,232.00	1,946,089,947.00	439,505,006.60	814,520
2018년	2,530,429,894.00	5,176,814,080.00	6,993,019,928.00	1,710,115,976.00	2,258,080,472.00	2,018,369,994.00	440,822,005.70	829,944
2019년	2,274,040,363.00	5,032,846,336.00	6,492,630,024.00	1,524,579,958.00	2,185,507,840.00	1,822,310,046.00	403,369,984.00	814,511
합계	7,384,359,872.00	15,395,217,400.00	19,910,300,270.00	5,008,329,901.00	6,761,100,288.00	5,787,270,250.00	1,303,700,045.00	2,458,985

graph. 2017년 - 2019년 차종별 유가보조금 지급 현황 분석

graph. 연도별 차종별 유가보조금 지급 추이 분석

유가보조금 부정수급 추이 분석

화물·버스·택시 차량에 대하여 국가의 유가보조금 지급과 부정수급 현황 및 연도별 추이를 분석한다.

유가보조금 부정수급 관리강화를 위한 노력

- 유가보조금 부정수급 현황 685건 적발 ('19년 11월 ~ '20년 4월)
- 유가보조금 부정수급 방지를 위한 다양한 홍보 활동 강화 중

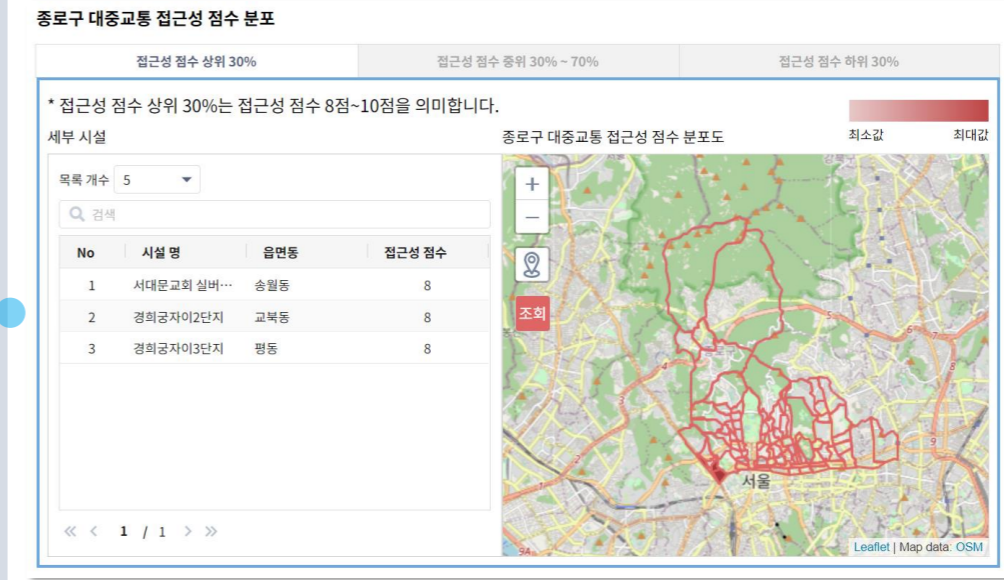
부정수급 예방을 위한 지속적인 유가보조금 지급현황과 부정수급 분석 서비스 제공 필요

유가보조금 부정수급을 범죄라는 인식 전환을 위한 지속적인 추이 분석 서비스 필요하며, 실제로 데이터 분석기법 적용 발표 이후 '19년 11월 170건 → '20년 4월 64건으로 감소했다.

nobigen
Take The Best For Smart Business

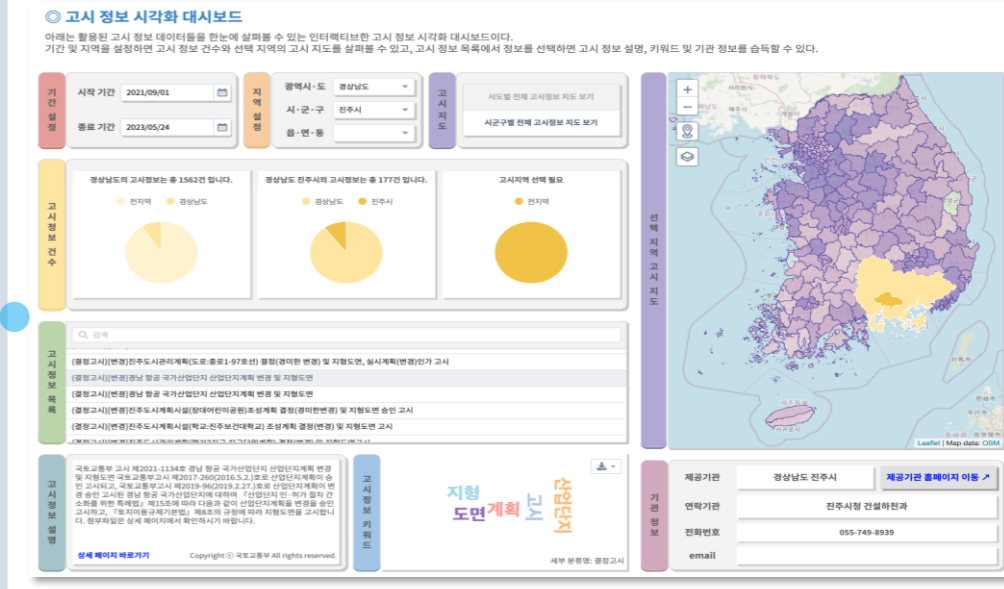
Ministry of Land, Infrastructure and Transport, Analysis of Accessibility to Senior Welfare Facilities

- Analyzing accessibility of senior living facilities via public transportation for people 65+ years old
 - Data for planning the supply of senior recreational facilities and rerouting public transit
- <https://data.molit.go.kr>



Ministry of Land, Infrastructure and Transport, Analysis of Notification Information by Region

- See the number of notices and information on the map by searching by time periods and regions.
- <https://data.molit.go.kr>



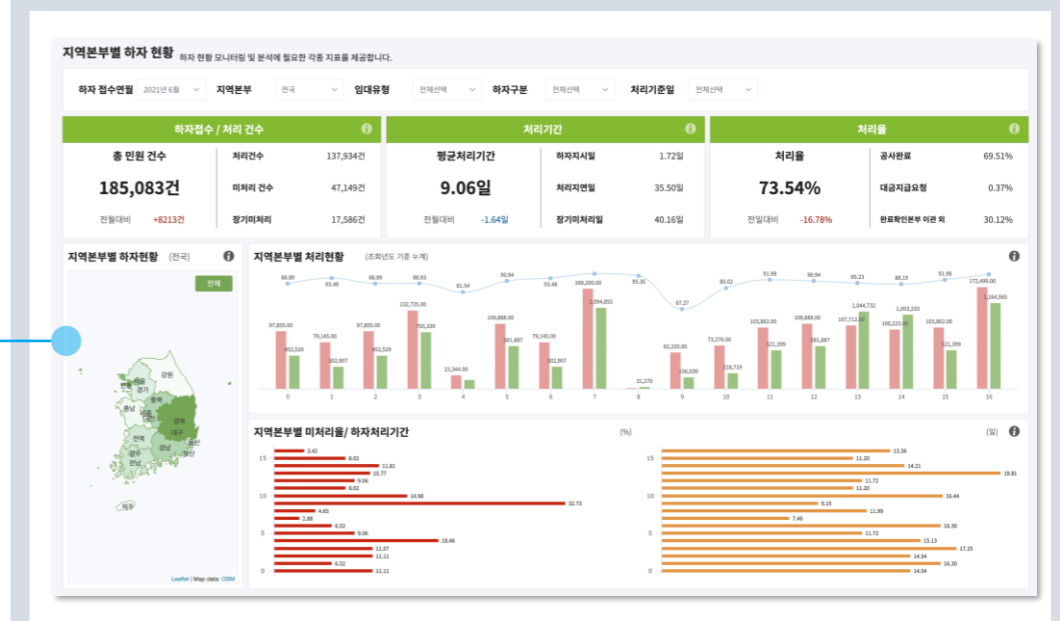
LH(Korea Land & Housing Corporation), External Variable Monitoring

Monitor changes in external variables such as currency volumes, interest rates, housing prices for business insights.



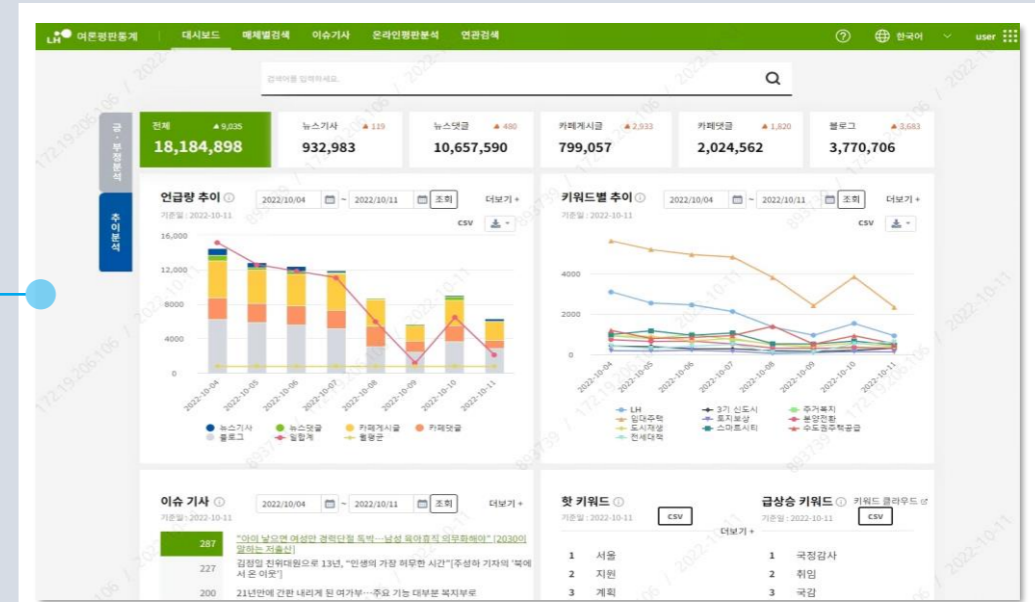
LH(Korea Land & Housing Corporation), Defect Data Analysis Dashboard

Provide data on the duration between reporting and resolution of major defects in rented apartments.

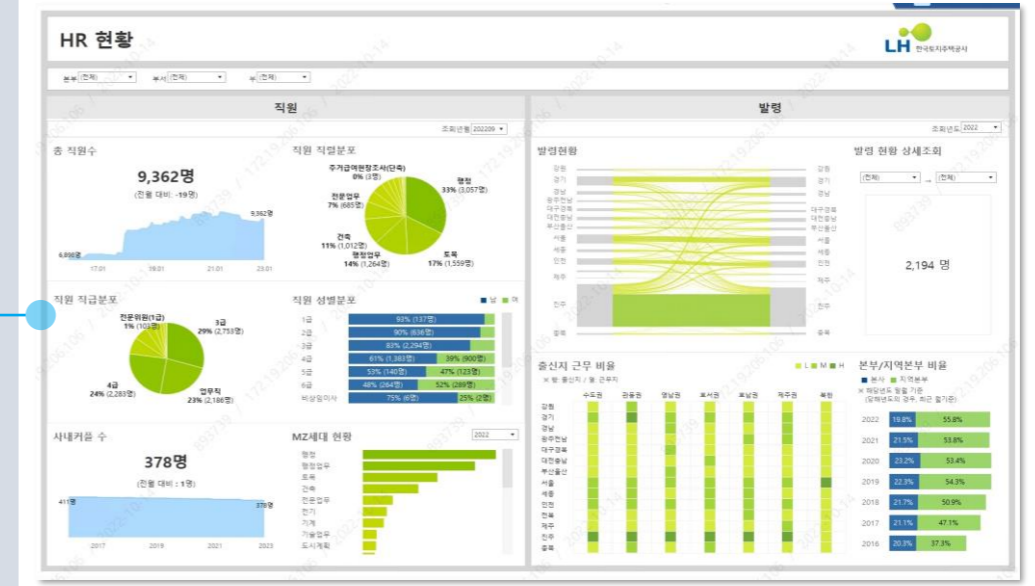


LH(Korea Land & Housing Corporation), Reputation Analysis of Public Opinion

– Provide key trends and reputation information about LH in news, social medias, online communities.

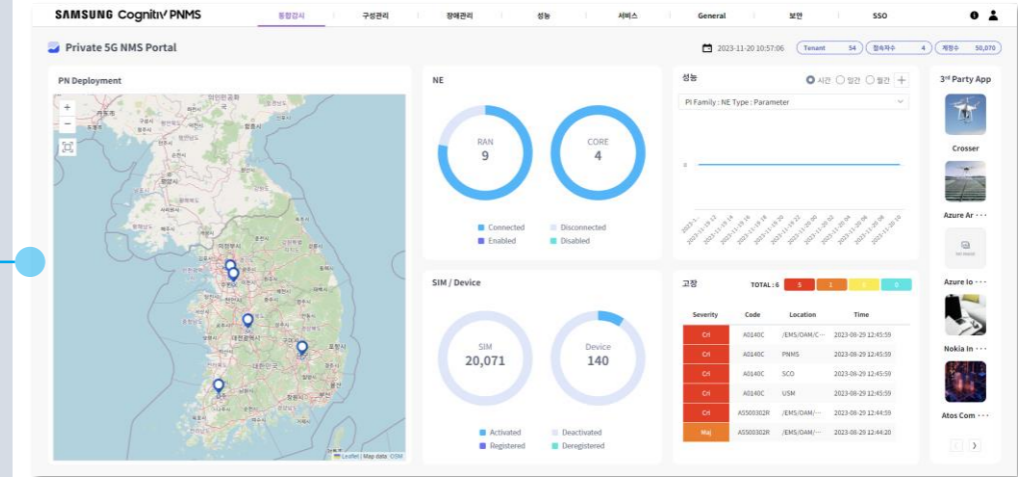


LH(Korea Land & Housing Corporation), HR Status

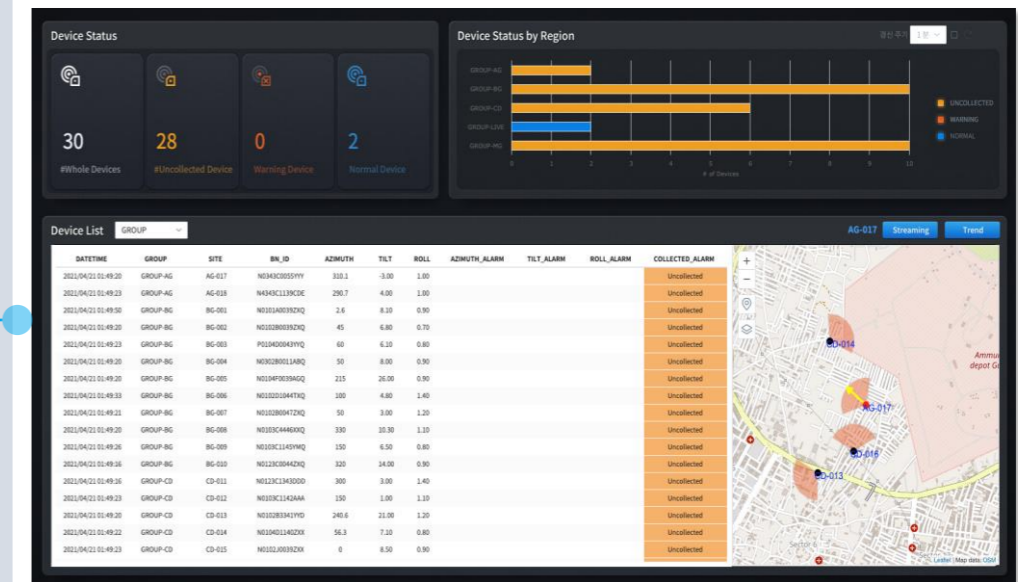


Samsung, Private 5G NMS Dashboard

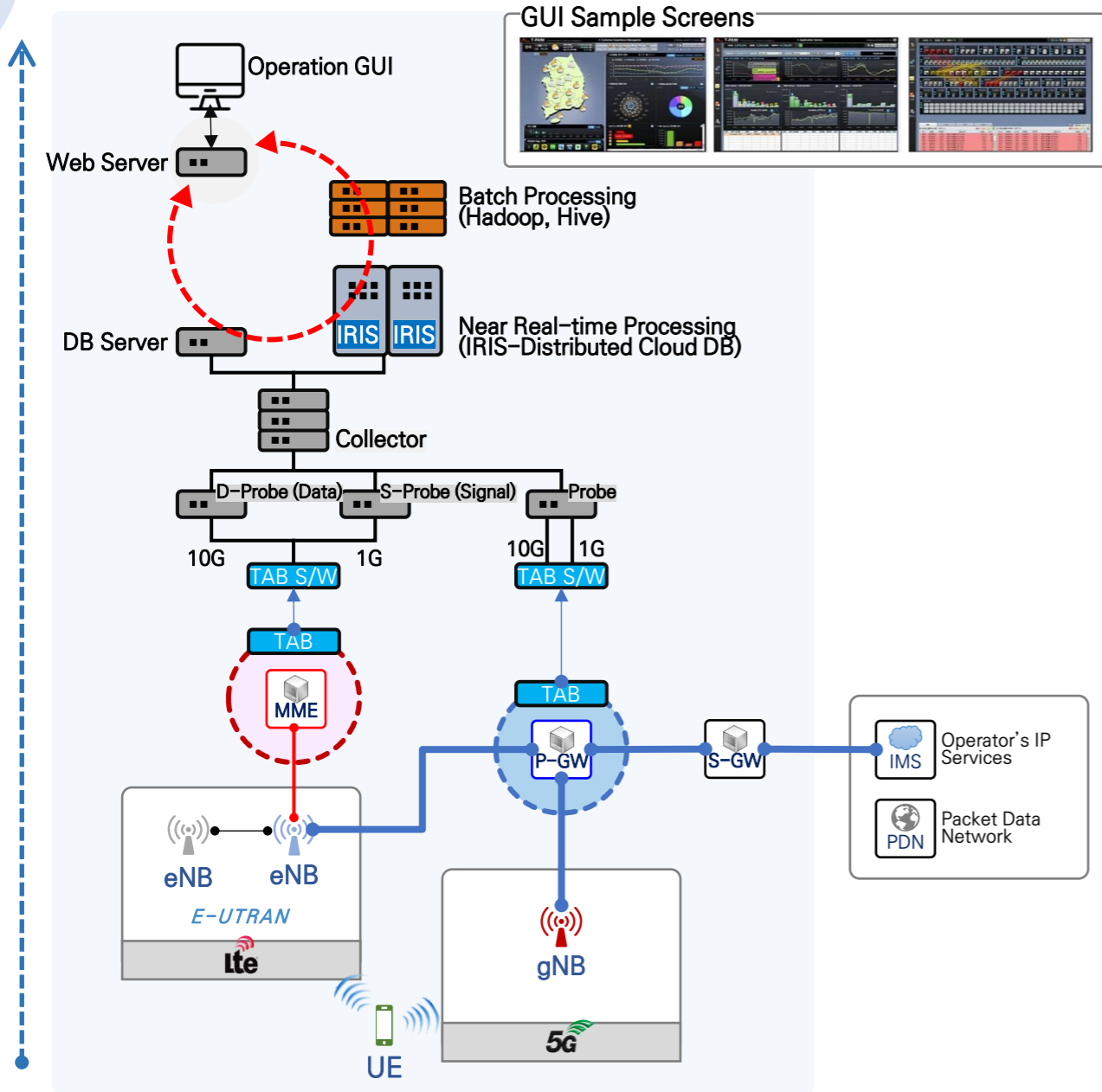
Management and control dashboard for components of key network systems on Private 5G network



Mobile Communication Base Station Smart Antenna Control Service



Good Data for AI, High-speed & high-capacity packet probe solution – ONEVision Probe




1. Applies operational know-how for more than 10 years from Korea's No.1 telecom carrier (SK Telecom)
2. Establishes a communication service operation system based on Customer-Experience Quality (CEI)
3. Protecting customers from cybercrime (Voice Phishing, ...) by analyzing mobile usage patterns
4. Reduces substantial cost through deep analysis of traffic (Minimizes interconnection traffic, Reduces CSP cost, ...)
5. Provides value-added sales data(e.g. commercial district analysis) and core data for AI-based operation automation
6. Korea's largest data processing and analysis (200 billion data/day)
7. Most Application Signatures in Korea

Mobigen works with leaders in various industries



Thank You

mobigen
Make The Best For Smart Business

 37, Geumto-ro 80beon-gil, Sujeong-gu, Seongnam-si, Gyeonggi-do, Korea, 13453

 +82-2-538-9360 FAX +82-2-538-9396

 sales@mobigen.com

 www.mobigen.com/eng